

DEPARTMENT OF CHILDREN AND FAMILIES

Child Welfare Act Reports

Chapter 176 of the Acts of 2008

Fiscal Year 2009

Angelo McClain, Commissioner

Jan Nisenbaum, Deputy Commissioner
Clinical Services & Program Operations Division

Olga Roche, Deputy Commissioner
Field Operations

Prepared by:

Ruben A. Ferreira, Assistant Commissioner
Continuous Quality Improvement / Professional Development
Clinical Services & Program Operations Division

Rosalind M. Walter, Director
Data Management / Quality Assurance Unit
Information Technology Division

September 2009

EXECUTIVE SUMMARY

This report has been prepared to meet the reporting requirements of Chapter 176 of the Acts of 2008. The report provides information reflecting trends over the past several years for many of the data elements, and point-in-time (March 31, 2009) data for other data elements. Included in this report is information on the number of children and families served, children in placement, adoption, and repeat maltreatment data analysis, as well as data on children hospitalized in acute care settings. Much of the information has been stratified by region, gender, age, and race or Hispanic/Latino(a) origin. The report provides valuable information on the children and families we serve and our progress toward targeted outcomes.

DCF Vision

Every child is entitled to a home that is free from abuse and neglect. The Department's vision is to ensure the safety of children in a manner that holds the best hope of nurturing a sustained, resilient network of relationships to support the child's growth and development into adulthood.

DCF Core Values

The DCF Core Values are anchors that ground our practice. DCF is committed to making these values more than words. By strengthening the links between the Department, families and communities, DCF has made significant progress in moving closer to case practice and service delivery systems that reflect our core values:

- Child-driven
- Family-centered
- Community-focused
- Strength-based
- Committed to Diversity and Cultural Competence
- Committed to Continuous Learning

DCF Overarching Goal

The Department's overarching goal is to *Safely Strengthen Families*.

DCF Priority Objectives

In September 2008, as part of our strategic planning process, the Department established three priority objectives to guide our work with children and families. Those priority objectives are:

1. To Safely Stabilize and Preserve Families
2. To Safely Reunify Families
3. To Safely Create New Families (through Kinship, Guardianship, Adoption)

Highlights of Findings

More people, Innovative maximization of resources, Better outcomes...

The following summary highlights key findings on select data elements described in greater detail in subsequent sections of the report.

Consumer and Case Counts

- A total of 86,776 individuals (41,386 adults and 45,390 children) were being served on March 31, 2009.
- The number of consumers served by DCF increased by 31% (20,743) in the twenty-two years between June 1987 and June 2009 (66,033 to 86,776):
 - 19% (12,502) of the increase occurred in the 20 years between June 1987 and June 2007 (66,033 to 78,535 consumers).
 - 10% (8,241) of the increase occurred in the 2 years between June 2007 and March 2009 (78,535 to 86,776 consumers).
- ***One-third (1/3) of the growth observed in the past 22-years has occurred in the last 2-years.***
 - The rate of consumer growth has **increased 5.5 fold** in each of the last 2-years relative to the prior 20 years.
- The Department is committed to safely maintaining children in their homes and has worked diligently over the past several years to reduce the number of children requiring placement. Overall out-of-home placement utilization for children (less than 18 years old) has been reduced by fourteen percent (14%) since July 2003 (from 10,233 in July 2003 to 8,794 consumers in March 2009).
- The Federal Children's Bureau and DCF set a target for FY'2009 of maintaining 86.4% of children at home. ***DCF achieved 98.6% of this target, safely maintaining 85.2% of the children we serve in their own home.***

Age, Gender, Race and Hispanic/Latino(a) Origin of Consumers

- On March 31, 2009, forty eight percent (48%) of all children under the age of eighteen were female and fifty six percent (56%) of all adults receiving services were female.
- At thirty-five percent (35%) of children served, adolescents between the ages of twelve and seventeen were the largest child group served by DCF.
- For FY'2009, the statewide caseload was comprised of 55% White, 16% Black, 2% Asian, 3% Multi-Racial, and 1% Native American. "Unable to Determine" was recorded for 14% of consumers. Selection of "unable to determine" for race often coincides with self-identification as Hispanic/Latino(a). A race was not recorded for 9% of consumers.
- Twenty-five percent (25%) of all consumers were of Hispanic/Latino(a) origin.
- A comparison of the racial composition of children receiving DCF services to children residing in Massachusetts showed that Black children and Hispanic/Latino(a) children are over-represented at all stages of the DCF system.
 - e.g., While 7% of the children in the Commonwealth are Black, they nevertheless account for 19% of the children in out-of-home placement and 22% of the children in congregate care settings (e.g., group home, residential, and short-term residential placement).

Kinship Care

- For children unable to remain safely in their home, placement with kin is the next preferable placement. DCF had established a target for FY'2009 that of all children in placement, at minimum twenty percent (20.3%) would be in kinship care. ***DCF achieved 113% of this target, placing twenty-three percent (23%) of children with kin.***

Placement Services

- There were 8,794 children less than eighteen years of age in out-of-home placement settings. An additional 1,630 young adults between the ages of eighteen and twenty-three were being served in out-of-home placement settings. Fifty two percent (52%) of children in placement were boys.
- DCF has reduced utilization of residential placement services from 1,253 to 833 (33.5%) since July of 2003.
- In FY'2009, DCF set a target that no more than 15.9% of children in placement would be in congregate care settings (e.g., group home, residential, and short-term residential placement). ***DCF achieved 104% of this target, with 15.3% of children being placed in congregate care.***
- The most represented age group in foster care was children ages twelve to seventeen. Adolescents were also the primary age group in congregate care settings, ranging from 64% - 75% across the six regions.
- Statewide, fifty eight percent (58%) of all consumers in placement were White, twenty percent (20%) were Black, two percent (2%) were Asian, less than one percent (1%) were Native American, and five percent (5%) were multi-racial. Twenty-six percent (26%) were Hispanic/Latino(a).
- Of children in placement within the twelve month period ending March 31, 2009, seventy-three percent (73%) had continuous placement of at least six months. Eighty-eight percent (88%) of young adults (18 years of age or older) were in placement greater than six months.
- Of the children in placement on March 31, 2009, thirty-six percent (35.9%) were in continuous placement greater than two years.

Placement Stability

- Placement stability is a significant factor in supporting achievement of permanency goals for children. DCF established a FY 2009 target that of children in out of home placement, who were in care for 12 months or less, eighty percent (80.1%) shall have 2 or fewer placements. ***DCF achieved ninety three percent (93%) of the established target.***

Reunification

- The National Standard for reunification of children who have been in out-of-home placement within 12 months is seventy five percent (75.2%). ***DCF has exceeded that national standard, reunifying 77.1% of children within twelve months.***

Re-entry to Placement

- For FY'2009, DCF set a target that ninety percent (89.6%) of children returning home would remain safely at home for least 12-months. ***DCF achieved ninety nine percent (99%) of the established target, safely maintaining 89.1% of reunified children at home.***

Adoptions

- In FY'2009, DCF met the national standard and exceeded the agency target established for the number of children adopted. The national standard for children being adopted within 24-months of entry into care is thirty-six percent (36.6%). DCF had established a target of thirty-five percent (35.3%) and the agency's actual performance was thirty-six percent (36.6%).
 - This represents a forty-eight percent (48.2%) increase in performance since March 2007, when the agency's performance was twenty-five percent (24.7%).

Reports of Child Maltreatment

- There were 78,744 reports of child abuse or neglect filed in FY'09. The FY'09 average was 6,562 reports per month (a 3.4% increase over FY'08). On average, one third of the reports of abuse or neglect are substantiated.
- From 1989 – 2008, the duplicated count of reported children with allegations of abuse or neglect rose from 38,010 to 101,243. The number of allegations supported after investigation rose from 14,048 to 34,973, a one hundred-forty-nine percent (149.0%) increase.
- Forty-six percent (46%) of the mothers who had a supported allegation of neglect in 2008, were less than 18 years of age when their first child was born—suggesting an association between teen parenting and future risk for perpetrating neglect.

Repeat Maltreatment

- In FY'2009, DCF targeted to have no more than 9.0% of children who were victims of supported allegations of abuse or neglect in a subsequent supported allegation during the following six months. DCF achieved ninety-seven percent (97.0%) of that target.
- DCF met its Federal Child and Family Service Review Program Improvement target for repeat maltreatment of children in out-of-home placement settings – 98.78% of children in placement settings were free of repeat maltreatment. We continue to strive to meet the National Standard of 99.68%
- For the twelve month period ending March 31, 2009, 1% of children were named as an alleged victim in three or more reports of abuse or neglect within a three month period. Within 4 -6 months, an additional 3% were identified in three or more reports, and within 7 – 12 months, 8% of children were identified in three or more reports of abuse or neglect.

Hospitalized Consumers

In the 28-months between March 2007 and June 2009 the Department has reduced the number of DCF children awaiting placement from an acute psychiatric facility from 132 to 45 (**66% reduction**).

Spending Summary

- Seventy percent (70%) of DCF's state appropriations are directed towards Purchased Client Services (MM) costs: i.e., purchase of services, payments to foster parents, adoptive parents and guardians.
- The second greatest cost component of DCF spending is employee compensation accounting for twenty-six percent (26%) of state funds. More than seventy-five percent (75%) of the employee compensation costs are associated with direct service staff.
- The remaining four percent (4%) of state dollars support DCF's administrative overhead costs, including a substantial space lease cost budget.

CONTENTS

TABLE/FIGURE	PAGE
<i>Consumer and Case Counts – FY'2009</i>	
Table 1.	Case and Consumer Counts by Location and DCF Region1
Table 2.	Consumer Counts : 1983-20092
Table 3.	Consumer Growth: 1987-20092
<i>Age, Gender, Race, Hispanic/Latino(a) Origin of Consumers</i>	
Figure 1.	Age and Gender of Consumers Statewide3
Table 4A.	Race of Consumers by DCF Region4
Table 4B.	Hispanic/Latino(a) Origin of Consumers by DCF Region4
Table 5.	Racial and Hispanic/Latino(a) Representation of Children Less than 18 Years Old within DCF5
Table 6.	Census 2000 Children Less Than 18 Years Old Residing in the 11 Largest Cities in MA5
<i>Profile of Consumers in Placement, Service Plan Goals, and Length of Stay</i>	
Table 7A.	Consumers in Placement – Age and Location7
Table 7B.	Consumers in Foster Care – Age and Location8
Table 7C.	Consumers in Congregate Care – Age and Location9
Table 7D.	Consumers in Placement – Gender and Location10
Table 7E.	Consumers in Foster Care – Gender and Location11
Table 7F.	Consumers in Congregate Care – Gender and Location11
Table 7G.	Consumers in Placement – Race and Hispanic/Latino(a) Origin12
Table 7H.	Consumers in Placement – Service Plan Goals12
Table 7I.	Consumers in Placement – Continuous Time in Care13
Table 7J.	Consumers in Placement by Race and Continuous Time in Care.13
Table 7K.	Consumers in Placement by Hispanic Origin and Continuous Time in Care13
Table 8A.	Consumers in Placement – Time in Placement by Age14
Table 8B.	Consumers in Placement – Time in Placement by Gender15
Table 8C.	Consumers in Placement – Time in Placement by Race16
Table 8D.	Consumers in Placement – Time in Placement by Hispanic Origin17
<i>Foster Care Reviews</i>	
Table 9A.	Foster Care Reviews Conducted18
<i>Consumers Entering and Leaving Placement During the 3rd Quarter of FY'2009</i>	
Table 10A.	Consumers Leaving Placement During the Quarter by Age19
Table 10B.	Consumers Leaving Placement During the Quarter by Gender20
Table 10C.	Consumers Leaving Placement During the Quarter by Race21
Table 10D.	Consumers Leaving Placement During the Quarter by Hispanic/Latino(a) Origin22
Table 11A.	Consumers Re-Entering Out-of-Home Care Within 12 Months of Reunification by Gender23
Table 11B.	Consumers Re-Entering Out-of-Home Care Within 12 Months of Reunification by Race24
Table 11C.	Consumers Re-Entering Out-of-Home Care W/in 12 Months of Reunification by Hispanic/Latino(a) Origin25
<i>Adoptions</i>	
Figure 2.	Consumers Receiving Adoption Subsidy26
Table 12A.	Consumers Released for Adoption by Age27
Table 12B.	Consumers Released for Adoption by Gender28
Table 12C.	Consumers Released for Adoption by Race29
Table 12D.	Consumers Released for Adoption by Hispanic/Latino(a) Origin30

CONTENTS (continued)

TABLE/FIGURE		PAGE
	<i>Child Maltreatment Reports and Investigations</i>	
Figure 13A.	51A Reports	31
Figure 13B.	Substantiated Investigations of Abuse or Neglect	31
Table 14A.	Consumers with Multiple Reports of Abuse or Neglect by Age	34
Table 14B.	Consumers with Multiple Reports of Abuse or Neglect by Gender	35
Table 14C.	Consumers with Multiple Reports of Abuse or Neglect by Race	36
Table 14D.	Consumers with Multiple Reports of Abuse or Neglect by Hispanic Origin	37
	<i>High Risk Consumers: Hospitalized Consumers</i>	
Figure 15A.	CARD Trend Analysis	38
Table 16A.	Consumers Hospitalized by Age.....	39
Table 16B.	Consumers Hospitalized by Gender	40
Table 16C.	Consumers Hospitalized by Race.....	41
Table 16D.	Consumers Hospitalized by Hispanic/Latino(a) Origin	42
	<i>Summary Spending Trends</i>	
Figure 17A.	All Account Types.....	43
Figure 17B.	Spending Trend by Appropriation	43
Figure 17C.	Spending Trend by Object Class.....	44
Figure 17D.	Historic Trends	44
Figure 17E.	Comparison of Social Worker FTEs to Caseload Average Trends.....	45

STATISTICAL OBSERVATIONS

Consumer and Case Counts – FY'2009

- Table 1 indicates that at the end of the 3rd Quarter of FY'2009, DCF had 25,939 open cases (1,834 adoption cases and 24,105 clinical cases). A total of 86,776 consumers¹ (41,386 adults and 45,390 children) were being served.
- There were 10,424 individuals in placement on the last day of the 3rd Quarter of FY'2009. Included in this count are 8,794 children (less than 18 years old) and 1,630 young adults (18 to 23 years old).
- At the end of the 3rd Quarter of FY'2009, there were 36,596 children less than 18 years old with an active case status who were not in placement.
- DCF recognizes that the preferred placement for all children is to safely remain in their home. Toward this end, DCF (and the Federal Children's Bureau) set a target of maintaining 86.4% of children in open cases at home.
 - Actual performance was 85.2%: 98.6% of the target was achieved.
 - Overall out-of-home placement utilization for children (less than 18 years old) has been reduced by fourteen percent (14%) since July 2003 (from 10,233 in July 2003 to 8,794 consumers in March 2009).

TABLE 1. CASE AND CONSUMER COUNTS BY LOCATION AND DCF REGION: FY'2009, End of 3RD QUARTER (3/31/09)

Case Counts:	DCF Geographic Region						Adoption		Total
	West	Central	Northeast	Metro	Southeast	Boston	Contracts ⁽¹⁾	Other ⁽²⁾	
Adoption	371	275	266	242	347	183	149	1	1,834
Clinical	4,805	3,399	4,185	3,344	5,097	3,207	3	65	24,105
Total	5,176	3,674	4,451	3,586	5,444	3,390	152	66	25,939
Consumer Counts:									
Adults: ⁽³⁾									
In Placement: ⁽⁴⁾ Foster/Congregate Care ⁽⁵⁾	254	172	357	229	307	245	---	29	1,593
Other ⁽⁶⁾	3	1	6	3	3	8	---	2	26
On the Run	---	3	1	2	1	4	---	---	11
Total in Placement	257	176	364	234	311	257	---	31	1,630
Not in Placement	8,114	5,720	6,427	5,426	8,724	5,326	---	19	39,756
Total Adults	8,371	5,896	6,791	5,660	9,035	5,583	---	50	41,386
Children:									
In Placement: ⁽⁴⁾ Foster/Congregate Care ⁽⁵⁾	1,771	1,259	1,342	1,088	1,688	987	228	23	8,386
Other ⁽⁶⁾	48	36	58	30	36	33	---	---	241
On the Run	48	12	30	19	29	28	1	---	167
Total in Placement	1,867	1,307	1,430	1,137	1,753	1,048	229	23	8,794
Not in Placement	7,777	5,509	6,431	4,570	7,478	4,819	8	4	36,596
Total Children	9,644	6,816	7,861	5,707	9,231	5,867	237	27	45,390
Total	18,015	12,712	14,652	11,367	18,266	11,450	237	77	86,776

⁽¹⁾ Licensed private adoption agencies that contract with DCF to provide case management services.

⁽²⁾ Includes primarily families served through Central Office contracts. ⁽³⁾ Adults are consumers 18 years or older.

⁽⁴⁾ Children and young adults in the care/custody of DCF. "Adults" in Foster/Residential Care are being transitioned to the Departments of Mental Health (DMH) and Mental Retardation (DMR) or are supported by DCF until graduation from a full-time school or vocational training program (through age 23 for a Bachelor's Degree).

⁽⁵⁾ See Tables 5A, 5B, and 5C for a breakdown by type of placement. ⁽⁶⁾ "Other" includes locations such as hospitals and other state agencies.

¹ Total consumers include all individuals with an active case status on the last day of the quarter and were in a case with an assessment for services or a service plan. These selection criteria exclude consumers not in placement who have an active case status that is pending the outcome of an investigation.

- The number of children less than 18 years old in placement increased 1% from the 2nd to the 3rd Quarter of FY'2009 (Table 2 below). The highest number of children less than 18 years old in placement was recorded in 1995 (13,302).
- The count of open consumers surged to 87,176 in the 4th quarter of FY'2008 and has remained at record levels during the subsequent three quarters (see table below). This peak value can be attributed to: a prolonged growth in the numbers of adults 18 years or older, and youth 18 years or older in placement; and a more recent surge in children not in placement.

Consumer Counts – Historical

TABLE 2. CONSUMER COUNTS: 1983-2009

Month/Year	All Consumers	All Children <18 yrs	Children in Placement <18 yrs	Month/Year	All Consumers	All Children <18 yrs	Children in Placement <18 yrs
6/1983	61,786	33,516	NA	1/1998	70,092	40,574	11,227
6/1984	73,111	38,683	7,024	9/1998	68,331	38,507	10,872
6/1985	75,935	40,628	7,779	6/1999	69,494	39,144	10,134
6/1986	74,769	40,511	8,041	6/2000	72,423	40,691	9,676
6/1987	66,033	37,497	8,075	6/2001	73,116	40,069	9,955
6/1988	67,658	38,792	8,661	6/2002	70,688	38,442	10,033
6/1989	70,052	40,497	9,544	6/2003	75,247	40,341	10,233
6/1990	80,090	46,403	10,998	6/2004	77,368	42,023	9,967
6/1991	81,975	47,922	12,392	6/2005	77,305	41,773	9,709
6/1992	72,128	42,367	12,379	6/2006	78,014	41,690	9,459
6/1993	72,340	42,656	12,763	6/2007	78,535	41,550	9,109
6/1994	72,879	43,074	13,194	6/2008	87,176	45,730	9,281
6/1995	73,032	42,997	13,302	9/2008	85,056	44,528	8,963
6/1996	72,638	42,551	12,736	12/2008	86,371	45,184	8,729
6/1997	74,921	43,570	12,193	3/2009	86,776	45,390	8,794

Source: ASSIST (6/1983-1/1998) and FamilyNet (9/1998-3/2009)

- The number of consumers served by DCF increased by 31% (20,743) in the twenty-two years between June 1987 and June 2009 (66,033 to 86,776):
 - 19% (12,502) of the increase occurred in the 20 years between June 1987 and June 2007 (66,033 to 78,535 consumers).
 - 10% (8,241) of the increase occurred in the 2 years between June 2007 and March 2009 (78,535 to 86,776 consumers).
 - *One-third (1/3) of the growth observed in the past 22-years has occurred in the last 2-years.*
- Table 3 reveals that on average, there was a 0.9% annual rate of growth between 6/1987 and 6/2007. The last two years (6/2007 to 3/2009) have shown a 5.2% annual rate of growth: a **5.5 fold increase** over the annual rate of growth between 6/1987 and 6/2007.
 - *This rate of growth is particularly sobering given the reduction in overall resources over the past several months.*

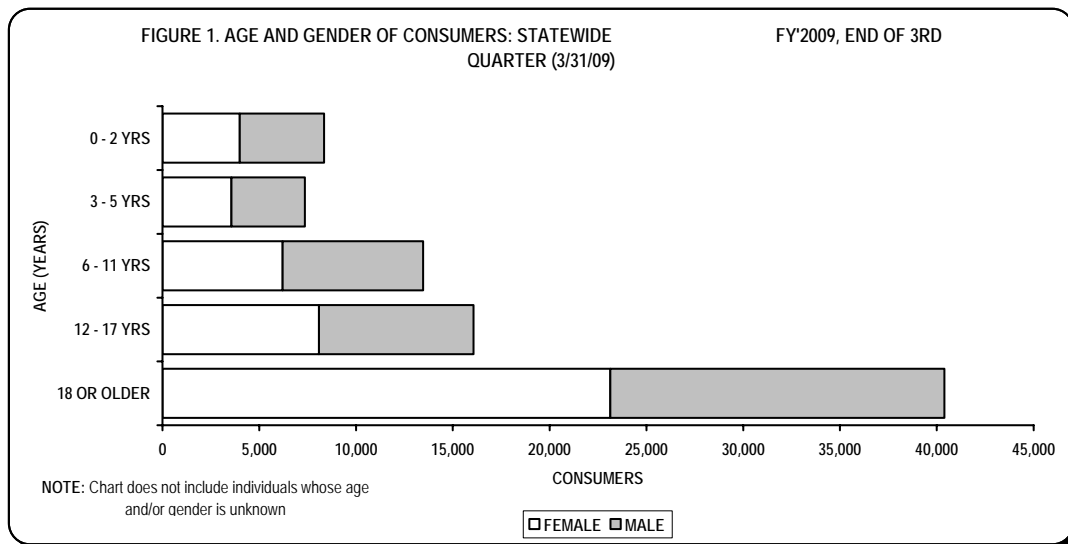
TABLE 3. CONSUMER GROWTH: 1987-2009

6/1987	6/2007	3/2009	Annual Growth Rate 1987-2007	Annual Growth Rate 2007-2009	Rate Change 6/1987 to 3/2009
66,033	78,535	86,776	0.9%	5.2%	5.5x

Age, Gender, Race, and Hispanic/Latino(a) Origin of Consumers

Age

- On the last day of the 3rd Quarter of FY'2009, the consumer population included 45,390 (52%) children less than 18 years old and 41,386 (48%) adults 18 years or older. Fifty-two percent (45,064) of all consumers were identified as female, 47% (40,827) as male, and 1% (885) were unspecified as of the run-date. Thirty-five percent (16,102) of all children were adolescents (12 to 17 years old). (Fig. 1 below)
- Forty-eight percent (48%) of all children receiving DCF services were female. In contrast, 56% of all adults receiving services were female.



Age (Yrs)	Gender			Total
	Female	Male	Unspecified ⁽¹⁾	
0 - 2	4,000	4,347	44	8,391
3 - 5	3,569	3,783	32	7,384
6 - 11	6,209	7,254	33	13,496
12 - 17	8,089	7,983	30	16,102
18 or older	23,128	17,256	540	40,924
Unspecified ⁽¹⁾	69	204	206	479
Total	45,064	40,827	885	86,776

⁽¹⁾ Unspecified includes 462 individuals with the role "Consumer Adult" and 17 individuals with the role "Consumer Child" whose ages were unknown and 885 consumers whose gender was not specified as of the run date.

Race and Hispanic/Latino(a) Origin

- The statewide caseload was comprised of 55% White, 16% Black, 2% Asian, 3% Multi-Racial, and less than 1% Native American consumers. The category “Unable to Determine” was recorded for 14% of consumers. Selection of “Unable to Determine” for race often coincides with self-identification as Hispanic/Latino(a). Race was not recorded (missing) for 9% of consumers. (Table 4A below)
- Of the total consumer population, 25% (21,740 consumers) were of Hispanic/Latino(a) origin. Hispanic /Latino(a) origin could not be determined for 3% of DCF consumers. Hispanic Hispanic/Latino(a) origin was not recorded (missing) for 12% of DCF consumers. (Table 4B below)

TABLE 4A. RACE OF CONSUMERS BY DCF REGION: FY'2009, End of 3RD QUARTER (3/31/09)

Race	DCF Geographic Region												Adoption		Total			
	West		Central		Northeast		Metro		Southeast		Boston		Contracts ⁽¹⁾		Other ⁽²⁾		No.	%
	No.	%	No.	%	No.	%	No.	%	No.	%	No.	%	No.	%				
White	9,764	54%	8,124	64%	8,553	58%	6,890	61%	12,137	66%	2,448	21%	103	43%	7	9%	48,026	55%
Black	1,977	11%	1,097	9%	1,169	8%	1,881	17%	2,642	14%	5,159	45%	43	18%	52	68%	14,020	16%
Asian	78	*	124	1%	964	7%	303	3%	104	1%	265	2%	4	2%	16	21%	1,858	2%
Native American	20	*	31	*	24	*	14	*	71	*	13	*	1	*	---	---	174	*
Other (3)	24	*	7	*	13	*	4	*	15	*	9	*	---	---	---	---	72	*
Multi-Racial	490	3%	424	3%	507	3%	280	2%	625	3%	178	2%	29	12%	---	---	2,533	3%
Unable to Determine	3,284	18%	1,993	16%	2,667	18%	1,042	9%	1,107	6%	2,382	21%	57	24%	2	3%	12,534	14%
Missing	2,378	13%	912	7%	755	5%	953	8%	1,565	9%	996	9%	---	---	---	---	7,559	9%
Total	18,015	100%	12,712	100%	14,652	100%	11,367	100%	18,266	100%	11,450	100%	237	100%	77	100%	86,776	100%

* = Less than 1% after rounding-off

⁽¹⁾ Licensed private adoption agencies that contract with DCF to provide case management services.

⁽²⁾ Includes primarily families served through Central Office contracts.

⁽³⁾ Includes Native Hawaiian and Other Pacific Islanders.

TABLE 4B. HISPANIC/LATINO(A) ORIGIN OF CONSUMERS BY DCF REGION: FY'2009, End of 3RD QUARTER (3/31/09)

Origin	DCF Geographic Region												Adoption		Total			
	West		Central		Northeast		Metro		Southeast		Boston		Contracts ⁽²⁾		Other ⁽³⁾		No.	%
	No.	%	No.	%	No.	%	No.	%	No.	%	No.	%	No.	%				
Hispanic/Latino(a) ⁽¹⁾	5,850	32%	3,483	27%	4,809	33%	1,649	15%	2,262	12%	3,607	32%	67	28%	13	17%	21,740	25%
Not Hispanic/Latino(a)	8,853	49%	7,523	59%	8,304	57%	7,541	66%	12,960	71%	6,073	53%	148	62%	59	77%	51,461	59%
Unable to Determine	743	4%	417	3%	452	3%	454	4%	585	3%	358	3%	22	9%	1	1%	3,032	3%
Missing	2,569	14%	1,289	10%	1,087	7%	1,723	15%	2,459	13%	1,412	12%	---	---	4	5%	10,543	12%
Total	18,015	100%	12,712	100%	14,652	100%	11,367	100%	18,266	100%	11,450	100%	237	100%	77	100%	86,776	100%

Note: The summation of relative percentages may not equal 100% due to rounding-off.

⁽¹⁾ Consumers of any race who self-identify as being of Hispanic origin.

⁽²⁾ Licensed private adoption agencies that contract with DCF to provide case management services.

⁽³⁾ Includes primarily families served through Central Office contracts.

- A racial comparison of children receiving various services from DCF to children residing in Massachusetts is displayed in the Table 5. Black children and Hispanic/Latino(a) children are over-represented at all stages in the DCF system. However, the actual extent of racial and ethnic disproportionality is not known given the number of children whose race and/or ethnicity has not been recorded. Additionally, this comparison of statewide statistics does not take into consideration the significant differences in racial and ethnic composition among communities across the state.

Table 5. RACIAL AND HISPANIC/LATINO(A) REPRESENTATION OF CHILDREN LESS THAN 18 YEARS OLD WITHIN DCF

Race	State Census ¹ 2000	DCF Not in Substitute Care 3/31/09	DCF All in Substitute Care* 3/31/09	DCF Foster Care 3/31/09	DCF Congregate Care** 3/31/09	DCF All Care w/Goal of Adoption 3/31/09	DCF All Care w/Goal of Guardianship 3/31/09	DCF Adoptions Legalized FY'2008	DCF Guardianships Legalized FY'2008
White	79%	56%	59%	59%	60%	59%	59%	62%	61%
Black	7%	17%	19%	18%	22%	18%	20%	15%	17%
Asian	4%	2%	2%	2%	1%	1%	1%	<1%	2%
Native American	<1%	<1%	<1%	<1%	<1%	<1%	<1%	<1%	---
Pacific Islander	<1%	<1%	<1%	<1%	<1%	---	---	---	---
Multi-Racial	4%	4%	6%	6%	4%	9%	5%	8%	5%
Other/Unknown	6%	21%	14%	15%	12%	13%	14%	14%	15%
TOTAL %	100%	100%	100%	100%	100%	100%	100%	100%	100%
TOTAL #	1,500,064	36,596	8,794	6,679	1,707	2,437	566	780	543
Hispanic Origin ² : Yes	11%	31%	26%	27%	23%	25%	28%	27%	25%
Hispanic Origin: No	89%	62%	69%	68%	73%	69%	68%	66%	72%
Hisp. Origin: Unknown	---	7%	5%	5%	4%	7%	4%	7%	3%
TOTAL %	100%	100%	100%	100%	100%	100%	100%	100%	100%

NOTE: The summation of relative percentages may not be equal to 100% due to rounding-off.

*Substitute Care includes: foster care, congregated care, on the run from placement, and non-referral locations such as hospitals, nursing homes, and other state agencies. Despite placement with other state agencies, DCF retains custody of the child.

**Congregate Care includes: group home, residential, and short-term residential placement.

- Table 6 displays the racial (and Hispanic/Latino(a) origin) composition of children residing in the 11 largest cities in Massachusetts.

TABLE 6. CENSUS 2000: CHILDREN LESS THAN 18 YEARS OLD RESIDING IN THE 11 LARGEST CITIES IN MA²

Race	Boston	Worcester	Springfield	Lowell	Lynn	Brockton	New Bedford	Fall River	Cambridge	Quincy	Newton
White	32%	65%	41%	56%	54%	48%	70%	84%	52%	72%	85%
Black	40%	10%	26%	5%	14%	24%	6%	5%	24%	3%	2%
Asian	7%	6%	2%	23%	10%	3%	1%	4%	9%	21%	9%
Nat. American	1%	1%	<1%	<1%	1%	<1%	1%	<1%	<1%	<1%	<1%
Pac. Islander	<1%	<1%	<1%	<1%	<1%	<1%	<1%	<1%	<1%	----	<1%
Multi-Racial	6%	6%	6%	6%	8%	12%	9%	4%	9%	3%	3%
Other/Unknown	14%	12%	24%	9%	14%	14%	14%	3%	6%	1%	1%
TOTAL %	100%	100%	100%	100%	100%	100%	100%	100%	100%	100%	100%
TOTAL #	116,559	40,727	44,027	28,341	24,051	26,254	23,327	22,179	13,447	15,381	17,811
His. Origin ³ : Yes	24%	26%	40%	21%	27%	12%	17%	7%	13%	3%	3%
TOTAL %	100%	100%	100%	100%	100%	100%	100%	100%	100%	100%	100%

NOTE: The summation of relative percentages may not be equal to 100% due to rounding-off.

² U.S. Census Bureau, American Fact Finder (factfinder.census.gov), Decennial Census, Census 2000 Summary, File 1 (SF 1) 100-Percent Data, Detailed Tables (P12, P12A-H), Select Geography.

³ Children of any race who are Hispanic/Latino(a).

Placement Services Overview

Total Children in Care

- There were 10,424 consumers in care during the last day of the 3rd Quarter of FY'2009.
 - Foster Care = 7,902 (75.8%)
 - Congregate Care = 2,077 (19.9%)
 - Other = 445 (4.3%)

Kinship Care

- For children unable to remain safely in their home, placement with kin is the next preferable placement. Placement with a kinship family reinforces a child's racial, ethnic, linguistic, cultural and religious heritage and strengthens and promotes continuity of familial relationships.
- Toward this end, DCF targeted for FY 2009 that of all children in placement, at minimum 20.3% will be in kinship care (kinship and child specific home).
 - Actual FY2009 performance was 23.0%: 113% of the target was achieved.
 - Asian Children = 17.1%
 - Black Children = 18.6%
 - Hispanic/Latino(a) Children = 21.5%
 - White Children = 30.1%
 - In June 2009, 40.4% of ALL Foster Care placements were in kinship care.

Reliance on Congregate Care

- All children should live in the least restrictive setting possible to meet their needs and promote achievement of their permanency goal. Placements are to be made in accordance with permanency planning objectives. Determination of placement setting is based on a child's needs, the nature and length of the placement, and the resources available.
- DCF has reduced utilization of residential placement services by 33.5% since July of 2003 (from 1,253 to 833). To continue this effort, DCF has set a target that no more than 15.9% of children in placement will be congregate care (e.g., group home, residential, and short-term residential placement).
 - Actual performance was 15.3%: 104% of the target was achieved.
 - Asian Children = 9.7%
 - Black Children = 17.4%
 - Hispanic/Latino(a) Children = 13.2%
 - White Children = 15.2%

Placement Stability

- All children in DCF custody should have stable out-of-home placements. As such, DCF has established a FY 2009 target that of children in out of home placement, who were in care for 12 months or less, 80.1% (while working toward the national Standard of 86.0% or greater) shall have 2 or fewer placements.
- Actual performance was 74.7%: 93% of target was achieved.
 - Asian Children = 84.7%
 - Black Children = 71.4%
 - Hispanic/Latino(a) = 73.3%
 - White Children = 75.4%

Profile of Consumers in Placement¹

Profile of Consumers in Foster Care System

- There were 7,902 consumers in foster care and 2,077 consumers in congregate care² on the last day of the 3rd Quarter of FY'2009. The most represented age group in foster care was 12-17 years (30-34% across regions). Adolescents were the primary age group in congregate care (64% to 75% across regions). Consumers in "Other" placement locations³ were primarily adolescents. (Table 7A below)

TABLE 7A. CONSUMERS IN PLACEMENT - AGE AND LOCATION: FY'2009, End of 3RD QUARTER (3/31/09)

DCF Geographic Region	Age Group	Foster Care		Congregate Care		Other ⁽⁶⁾		Total	
		No.	%	No.	%	No.	%	No.	%
West		1,696		329		99		2,124	
	(0 - 2 yrs)	354	21%	2	1%	3	3%	359	17%
	(3 - 5 yrs)	234	14%	1	*	2	2%	237	11%
	(6 - 11 yrs)	351	21%	36	11%	8	8%	395	19%
	(12 - 17 yrs)	564	33%	229	70%	83	84%	876	41%
	18 or older	193	11%	61	19%	3	3%	257	12%
Central		1,172		259		52		1,483	
	(0 - 2 yrs)	207	18%	---	---	2	4%	209	14%
	(3 - 5 yrs)	179	15%	2	1%	---	---	181	12%
	(6 - 11 yrs)	269	23%	50	19%	6	12%	325	22%
	(12 - 17 yrs)	376	32%	176	68%	40	77%	592	40%
	18 or older	141	12%	31	12%	4	8%	176	12%
Northeast		1,312		387		95		1,794	
	(0 - 2 yrs)	209	16%	---	---	3	3%	212	12%
	(3 - 5 yrs)	153	12%	1	*	4	4%	158	9%
	(6 - 11 yrs)	252	19%	37	10%	10	11%	299	17%
	(12 - 17 yrs)	439	33%	251	65%	71	75%	761	42%
	18 or older	259	20%	98	25%	7	7%	364	20%
Metro		922		395		54		1,371	
	(0 - 2 yrs)	167	18%	---	---	---	---	167	12%
	(3 - 5 yrs)	109	12%	4	1%	3	6%	116	8%
	(6 - 11 yrs)	199	22%	30	8%	1	2%	230	17%
	(12 - 17 yrs)	282	31%	297	75%	45	83%	624	46%
	18 or older	165	18%	64	16%	5	9%	234	17%
Southeast		1,585		410		69		2,064	
	(0 - 2 yrs)	322	20%	1	*	---	---	323	16%
	(3 - 5 yrs)	245	15%	7	2%	1	1%	253	12%
	(6 - 11 yrs)	298	19%	46	11%	10	14%	354	17%
	(12 - 17 yrs)	468	30%	301	73%	54	78%	823	40%
	18 or older	252	16%	55	13%	4	6%	311	15%
Boston		935		297		73		1,305	
	(0 - 2 yrs)	182	19%	1	*	---	---	183	14%
	(3 - 5 yrs)	100	11%	3	1%	---	---	103	8%
	(6 - 11 yrs)	152	16%	43	14%	5	7%	200	15%
	(12 - 17 yrs)	317	34%	189	64%	56	77%	562	43%
	18 or older	184	20%	61	21%	12	16%	257	20%
Adoption Contracts^(a)		228		---		1		229	
	(0 - 2 yrs)	28	12%	---	---	---	---	28	12%
	(3 - 5 yrs)	48	21%	---	---	---	---	48	21%
	(6 - 11 yrs)	112	49%	---	---	---	---	112	49%
	(12 - 17 yrs)	40	18%	---	---	1	100%	41	18%
Other^(b)		52		---		2		54	
	(0 - 2 yrs)	1	2%	---	---	---	---	1	2%
	(3 - 5 yrs)	1	2%	---	---	---	---	1	2%
	(6 - 11 yrs)	2	4%	---	---	---	---	2	4%
	(12 - 17 yrs)	19	37%	---	---	---	---	19	35%
	18 or older	29	56%	---	---	2	100%	31	57%
STATEWIDE		7,902		2,077		445		10,424	
	(0 - 2 yrs)	1,470	19%	4	*	8	2%	1,482	14%
	(3 - 5 yrs)	1,069	14%	18	1%	10	2%	1,097	11%
	(6 - 11 yrs)	1,635	21%	242	12%	40	9%	1,917	18%
	(12 - 17 yrs)	2,505	32%	1,443	69%	350	79%	4,298	41%
	18 or older	1,223	15%	370	18%	37	8%	1,630	16%

* = Less than 1% after rounding-off. Note: The summation of relative percentages may not equal 100% due to rounding-off.

^(a) Licensed private adoption agencies that contract with DCF to provide case management services. ^(b) Primarily families served through Central Office contracts.

¹Consumers include children less than 18 years old and young adults 18 to 23 years old.

²Congregate Care includes: group home, residential, and short-term residential placement.

³"Other" includes locations such as hospitals, nursing homes, other state agencies, and children on-the-run.

Profile of Consumers in Foster Care

- There were 2,095 consumers in "Intensive" foster care¹ (IFC) and 5,807 consumers in "Departmental" foster care. Departmental foster care was separated into unrestricted (39% of consumers), kinship (31%), child specific (10%), pre-adoptive (8%), and independent living (13%). (Table 7B below)

TABLE 7B. CONSUMERS IN FOSTER CARE - AGE AND LOCATION: FY'2009, End of 3RD QUARTER (3/31/09)

DCF Geographic Region	Age Group	Foster Care										Foster Care Total					
		Intensive Foster Care				Departmental Foster Care											
		Intensive Foster Care		Other [^]		Child Specific		Independent Living		Kinship		Pre-Adoptive		Unrestricted		No.	%
West		430		7		142		109		316		110		582	1,696		
	(0 - 2 yrs)	19	4%	6	86%	26	18%	---	---	86	27%	51	46%	166	29%	354	21%
	(3 - 5 yrs)	19	4%	---	---	17	12%	---	---	67	21%	26	24%	105	18%	234	14%
	(6 - 11 yrs)	81	19%	---	---	34	24%	---	---	85	27%	26	24%	125	21%	351	21%
	(12 - 17 yrs)	256	60%	---	---	54	38%	5	5%	73	23%	6	5%	170	29%	564	33%
	18 or older	55	13%	1	14%	11	8%	104	95%	5	2%	1	1%	16	3%	193	11%
Central		287		9		114		73		293		76		320	1,172		
	(0 - 2 yrs)	1	*	5	56%	19	17%	---	---	65	22%	20	26%	97	30%	207	18%
	(3 - 5 yrs)	13	5%	2	22%	13	11%	---	---	62	21%	32	42%	57	18%	179	15%
	(6 - 11 yrs)	66	23%	---	---	28	25%	---	---	92	31%	19	25%	64	20%	269	23%
	(12 - 17 yrs)	171	60%	1	11%	41	36%	---	---	65	22%	5	7%	93	29%	376	32%
	18 or older	36	13%	1	11%	13	11%	73	100%	9	3%	---	---	9	3%	141	12%
Northeast		364		38		87		180		309		39		295	1,312		
	(0 - 2 yrs)	41	11%	7	18%	6	7%	---	---	67	22%	8	21%	80	27%	209	16%
	(3 - 5 yrs)	28	8%	5	13%	9	10%	---	---	53	17%	12	31%	46	16%	153	12%
	(6 - 11 yrs)	56	15%	4	11%	19	22%	---	---	87	28%	15	38%	71	24%	252	19%
	(12 - 17 yrs)	194	53%	12	32%	44	51%	7	4%	96	31%	4	10%	82	28%	439	33%
	18 or older	45	12%	10	26%	9	10%	173	96%	6	2%	---	---	16	5%	259	20%
Metro		213		5		73		95		239		65		232	922		
	(0 - 2 yrs)	23	11%	2	40%	7	10%	---	---	47	20%	30	46%	58	25%	167	18%
	(3 - 5 yrs)	11	5%	---	---	5	7%	---	---	46	19%	16	25%	31	13%	109	12%
	(6 - 11 yrs)	37	17%	2	40%	16	22%	---	---	81	34%	14	22%	49	21%	199	22%
	(12 - 17 yrs)	121	57%	---	---	34	47%	---	---	54	23%	5	8%	68	29%	282	31%
	18 or older	21	10%	1	20%	11	15%	95	100%	11	5%	---	---	26	11%	165	18%
Southeast		348		9		101		149		413		84		481	1,585		
	(0 - 2 yrs)	22	6%	1	11%	11	11%	---	---	94	23%	34	40%	160	33%	322	20%
	(3 - 5 yrs)	28	8%	1	11%	9	9%	---	---	91	22%	24	29%	92	19%	245	15%
	(6 - 11 yrs)	70	20%	---	---	22	22%	---	---	101	24%	21	25%	84	17%	298	19%
	(12 - 17 yrs)	184	53%	---	---	41	41%	6	4%	106	26%	5	6%	126	26%	468	30%
	18 or older	44	13%	7	78%	18	18%	143	96%	21	5%	---	---	19	4%	252	16%
Boston		300		21		40		106		199		33		236	935		
	(0 - 2 yrs)	32	11%	3	14%	8	20%	---	---	54	27%	17	52%	68	29%	182	19%
	(3 - 5 yrs)	25	8%	6	29%	3	8%	---	---	31	16%	10	30%	25	11%	100	11%
	(6 - 11 yrs)	57	19%	1	5%	7	18%	---	---	52	26%	3	9%	32	14%	152	16%
	(12 - 17 yrs)	150	50%	8	38%	17	43%	---	---	52	26%	3	9%	87	37%	317	34%
	18 or older	36	12%	3	14%	5	13%	106	100%	10	5%	---	---	24	10%	184	20%
Adoption Contracts^(a)		63		1		24		---		36		46		58	228		
	(0 - 2 yrs)	1	2%	---	---	2	8%	---	---	9	25%	8	17%	8	14%	28	12%
	(3 - 5 yrs)	7	11%	1	100%	4	17%	---	---	14	39%	9	20%	13	22%	48	21%
	(6 - 11 yrs)	33	52%	---	---	12	50%	---	---	10	28%	27	59%	30	52%	112	49%
	(12 - 17 yrs)	22	35%	---	---	6	25%	---	---	3	8%	2	4%	7	12%	40	18%
Other^(b)		---		---		4		15		---		---		33	52		
	(0 - 2 yrs)	---	---	---	---	---	---	---	---	---	---	---	---	1	3%	1	2%
	(3 - 5 yrs)	---	---	---	---	---	---	---	---	---	---	---	---	1	3%	1	2%
	(6 - 11 yrs)	---	---	---	---	---	---	---	---	---	---	---	---	2	6%	2	4%
	(12 - 17 yrs)	---	---	---	---	2	50%	---	---	---	---	---	---	17	52%	19	37%
	18 or older	---	---	---	---	2	50%	15	100%	---	---	---	---	12	36%	29	56%
STATEWIDE		2,005		90		585		727		1,805		453		2,237	7,902		
	(0 - 2 yrs)	139	7%	24	27%	79	14%	---	---	422	23%	168	37%	638	29%	1,470	19%
	(3 - 5 yrs)	131	7%	15	17%	60	10%	---	---	364	20%	129	28%	370	17%	1,069	14%
	(6 - 11 yrs)	400	20%	7	8%	138	24%	---	---	508	28%	125	28%	457	20%	1,635	21%
	(12 - 17 yrs)	1,098	55%	21	23%	239	41%	18	2%	449	25%	30	7%	650	29%	2,505	32%
	18 or older	237	12%	23	26%	69	12%	709	98%	62	3%	1	*	122	5%	1,223	15%

* = Less than 1% after rounding-off. Note: The summation of relative percentages may not equal 100% due to rounding-off. ^ Includes "Sibling Rate" model.

^(a) Licensed private adoption agencies that contract with DCF to provide case management services. ^(b) Primarily families served through Central Office contracts.

¹Intensive Foster Care encompasses and expands upon services formerly known as "Contracted" Foster Care (Therapeutic, Diagnostic, Independent Living, Emergency Shelter, & Other models). IFC programs provide therapeutic services and supports in a family-based placement setting to children and youth for whom a traditional foster care environment is not sufficiently supportive, who are transitioning from a residential/group home level of care and require the intensity of services available through this program, or who are being discharged from a hospital setting.

Profile of Consumers in Congregate Care

- The major congregate care programs were group homes (898 consumers), residential (833 consumers), and short-term residential placement services (Stabilization and Rapid Reintegration also known as STARR)¹ (346 consumers). The proportions of consumers in different types of congregate care are shown for each region in Table 7C. Consumers in the residential program were mostly situated in Residential schools.²

TABLE 7C. CONSUMERS IN CONGREGATE CARE - AGE AND LOCATION: FY'2009, End of 3RD QUARTER (3/31/09)

DCF Geographic Region	Age Group	Congregate Care								STARR ^(B)		Total	
		Group Home			Residential								
		Behavioral Treatment Residence	Group Home	Independent Living Program	Residential School	Other Residential ^(a)	No.	%	No.	%			
West		90	49	18	117	2	53					329	
	(0 - 2 yrs)	---	---	---	---	---	---	---	---	2	4%	2	1%
	(3 - 5 yrs)	---	---	---	---	---	---	---	---	1	2%	1	*
	(6 - 11 yrs)	7	8%	2	4%	---	---	19	16%	---	---	8	15%
	(12 - 17 yrs)	81	90%	22	45%	2	11%	82	70%	2	100%	40	75%
	18 or older	2	2%	25	51%	16	89%	16	14%	---	---	2	4%
Central		61	51	6	87	2	52					259	
	(3 - 5 yrs)	---	---	1	2%	---	---	---	---	1	2%	2	1%
	(6 - 11 yrs)	12	20%	7	14%	---	---	19	22%	---	---	12	19%
	(12 - 17 yrs)	41	67%	32	63%	4	67%	58	67%	2	100%	39	75%
	18 or older	8	13%	11	22%	2	33%	10	11%	---	---	---	31
Northeast		80	47	62	150	1	47					387	
	(3 - 5 yrs)	---	---	---	---	---	---	---	---	1	2%	1	*
	(6 - 11 yrs)	19	24%	2	4%	---	---	11	7%	1	100%	4	9%
	(12 - 17 yrs)	58	73%	33	70%	9	15%	109	73%	---	---	42	89%
	18 or older	3	4%	12	26%	53	85%	30	20%	---	---	---	98
Metro		32	89	35	160	7	72					395	
	(3 - 5 yrs)	---	---	---	---	---	---	1	1%	---	---	3	4%
	(6 - 11 yrs)	7	22%	5	6%	---	---	13	8%	---	---	5	7%
	(12 - 17 yrs)	23	72%	70	79%	14	40%	122	76%	4	57%	64	89%
	18 or older	2	6%	14	16%	21	60%	24	15%	3	43%	---	64
Southeast		74	60	12	172	2	90					410	
	(0 - 2 yrs)	---	---	---	---	---	---	---	---	1	1%	1	*
	(3 - 5 yrs)	---	---	1	2%	---	---	---	---	6	7%	7	2%
	(6 - 11 yrs)	16	22%	1	2%	---	---	20	12%	---	---	9	10%
	(12 - 17 yrs)	55	74%	48	80%	6	50%	116	67%	2	100%	74	82%
	18 or older	3	4%	10	17%	6	50%	36	21%	---	---	---	55
Boston		44	57	31	122	11	32					297	
	(0 - 2 yrs)	---	---	---	---	---	---	---	---	1	3%	1	*
	(3 - 5 yrs)	---	---	---	---	---	---	1	1%	---	---	2	6%
	(6 - 11 yrs)	13	30%	3	5%	---	---	18	15%	---	---	9	28%
	(12 - 17 yrs)	28	64%	45	79%	5	16%	83	68%	8	73%	20	63%
	18 or older	3	7%	9	16%	26	84%	20	16%	3	27%	---	61
STATEWIDE		381	353	164	808	25	346					2,077	
	(0 - 2 yrs)	---	---	---	---	---	---	---	---	4	1%	4	*
	(3 - 5 yrs)	---	---	2	1%	---	---	2	*	---	---	14	4%
	(6 - 11 yrs)	74	19%	20	6%	---	---	100	12%	1	4%	47	12%
	(12 - 17 yrs)	286	75%	250	71%	40	24%	570	71%	18	72%	279	81%
	18 or older	21	6%	81	23%	124	76%	136	17%	6	24%	2	1%

(a) "Old" taxonomy includes non-766 residential program (2), Chap. 766 (2), teen pregnancy/parenting group home (18), other (1).

¹ Services focused on supporting a rapid reintegration or transition to a next placement.

² Staff secure placement is for children who have not sufficiently internalized behavioral controls and require a more highly structured setting to help them manage their behavior. These facilities are licensed by the Department of Education. Special education services are provided according to the child's Individual Education Plan (IEP).

Profile of Consumers in Foster Care System by Gender, Race, and Hispanic/Latino(a) Origin

- At the end of the 3rd Quarter of FY'2009, the statewide placement population was comprised of 52% boys and 48% girls. Regionally, the gender difference showed little deviation from the state (Table 7D below).
- The proportions of male and female children in the placement population were similar to the general population.¹ Nonetheless, more males (61%) are placed in congregate care than females (39%). This over-representation is observed throughout the country.

TABLE 7D. CONSUMERS IN PLACEMENT - GENDER & LOCATION: FY'2009, End of 3RD QTR (3/31/09)

DCF Geographic Region	Gender	Placement Location of Consumers						Total	
		Foster Care		Congregate Care		Other [^]		No.	%
		No.	%	No.	%	No.	%	No.	%
Western		1,696		329		99		2,124	
	Female	857	51%	116	35%	59	60%	1,032	49%
	Male	839	49%	213	65%	40	40%	1,092	51%
Central		1,172		259		52		1,483	
	Female	598	51%	99	38%	22	42%	719	48%
	Male	574	49%	160	62%	30	58%	764	52%
Northeast		1,312		387		95		1,794	
	Female	648	49%	156	40%	51	54%	855	48%
	Male	664	51%	231	60%	44	46%	939	52%
Metro		922		395		54		1,371	
	Female	493	53%	150	38%	25	46%	668	49%
	Male	429	47%	245	62%	29	54%	703	51%
Southeast		1,585		410		69		2,064	
	Female	787	50%	153	37%	36	52%	976	47%
	Male	798	50%	257	63%	33	48%	1,088	53%
Boston		935		297		73		1,305	
	Female	494	53%	132	44%	45	62%	671	51%
	Male	441	47%	165	56%	28	38%	634	49%
Adoption Contracts ^(a)		228		---		1		229	
	Female	101	44%	---	---	---	---	101	44%
	Male	127	56%	---	---	1	---	128	56%
Other ^(b)		52		---		2		54	
	Female	16	31%	---	---	2	---	18	33%
	Male	36	69%	---	---	---	---	36	67%
STATEWIDE		7,902		2,077		445		10,424	
	Female	3,994	51%	806	39%	240	54%	5,040	48%
	Male	3,908	49%	1,271	61%	205	46%	5,384	52%

* = Less than 1% after rounding-off. Note: The summation of relative percentages may not equal 100% due to rounding-off.

[^] "Other" includes locations such as hospitals and other state agencies, as well as consumers on the run from placement.

^(a) Licensed private adoption agencies that contract with DCF to provide case management services.

^(b) Includes primarily families served through Central Office contracts.

¹ Massachusetts child population: 51% male and 49% female (July 1, 2006). U.S. Census Bureau, State Population Estimates--Characteristics (www.census.gov/popest/states/asrh/tables/SC_EST2006-02-25.XLS)

- Within "Departmental" foster care and congregate care, females were significantly over-represented relative to males in Independent Living programs. (Table 7E & 7F)

TABLE 7E. CONSUMERS IN FOSTER CARE - GENDER AND LOCATION: FY'2009, End of 3RD QUARTER (3/31/09)

DCF Geographic Region	Gender	Foster Care									Foster Care Total No. %						
		Intensive Foster Care				Departmental Foster Care											
		Intensive Foster Care		Other		Child Specific		Independent Living		Kinship		Pre-Adoptive		Unrestricted			
No.	%	No.	%	No.	%	No.	%	No.	%	No.	%						
West		430		7		142		109		316		110		582	1,696		
	Female	182	42%	2	29%	74	52%	67	61%	170	54%	50	45%	312	54%	857	51%
	Male	248	58%	5	71%	68	48%	42	39%	146	46%	60	55%	270	46%	839	49%
Central		287		9		114		73		293		76		320	1,172		
	Female	112	39%	7	78%	56	49%	53	73%	154	53%	45	59%	171	53%	598	51%
	Male	175	61%	2	22%	58	51%	20	27%	139	47%	31	41%	149	47%	574	49%
Northeast		364		38		87		180		309		39		295	1,312		
	Female	157	43%	12	32%	39	45%	119	66%	168	54%	16	41%	137	46%	648	49%
	Male	207	57%	26	68%	48	55%	61	34%	141	46%	23	59%	158	54%	664	51%
Metro		213		5		73		95		239		65		232	922		
	Female	110	52%	---	---	41	56%	64	67%	116	49%	29	45%	133	57%	493	53%
	Male	103	48%	5	100%	32	44%	31	33%	123	51%	36	55%	99	43%	429	47%
Southeast		348		9		101		149		413		84		481	1,585		
	Female	150	43%	5	56%	57	56%	93	62%	212	51%	34	40%	236	49%	787	50%
	Male	198	57%	4	44%	44	44%	56	38%	201	49%	50	60%	245	51%	798	50%
Boston		300		21		40		106		199		33		236	935		
	Female	141	47%	13	62%	22	55%	68	64%	107	54%	11	33%	132	56%	494	53%
	Male	159	53%	8	38%	18	45%	38	36%	92	46%	22	67%	104	44%	441	47%
Adoption Contracts^(a)		63		1		24		---		36		46		58	228		
	Female	24	38%	1	100%	11	46%	---	---	16	44%	26	57%	23	40%	101	44%
	Male	39	62%	---	---	13	54%	---	---	20	56%	20	43%	35	60%	127	56%
Other^(b)		---		---		4		15		---		---		33	52		
	Female	---	---	---	---	2	50%	4	27%	---	---	---	---	10	30%	16	31%
	Male	---	---	---	---	2	50%	11	73%	---	---	---	---	23	70%	36	69%
STATEWIDE		2,005		90		585		727		1,805		453		2,237	7,902		
	Female	876	44%	40	44%	302	52%	468	64%	943	52%	211	47%	1,154	52%	3,994	51%
	Male	1,129	56%	50	56%	283	48%	259	36%	862	48%	242	53%	1,083	48%	3,908	49%

TABLE 7F. CONSUMERS IN CONGREGATE CARE - GENDER AND LOCATION: FY'2009, End of 3RD QUARTER (3/31/09)

DCF Geographic Region	Gender	Congregate Care						STARR	Total No. %						
		Group Home		Independent Living	Residential										
		Behavioral Treatment Residence	Group Home		Residential School	Other Residential									
No.	%	No.	%	No.	%	No.	%	No.	%						
Western		90		49		18		117		2		53		329	
	Female	32	36%	16	33%	15	83%	32	27%	2	100%	19	36%	116	35%
	Male	58	64%	33	67%	3	17%	85	73%	---	---	34	64%	213	65%
Central		61		51		6		87		2		52		259	
	Female	25	41%	21	41%	6	100%	22	25%	2	100%	23	44%	99	38%
	Male	36	59%	30	59%	---	---	65	75%	---	---	29	56%	160	62%
Northeast		80		47		62		150		1		47		387	
	Female	33	41%	23	49%	30	48%	45	30%	1	100%	24	51%	156	40%
	Male	47	59%	24	51%	32	52%	105	70%	---	---	23	49%	231	60%
Metro		32		89		35		160		7		72		395	
	Female	13	41%	30	34%	18	51%	51	32%	5	71%	33	46%	150	38%
	Male	19	59%	59	66%	17	49%	109	68%	2	29%	39	54%	245	62%
Southeast		74		60		12		172		2		90		410	
	Female	21	28%	28	47%	8	67%	52	30%	2	100%	42	47%	153	37%
	Male	53	72%	32	53%	4	33%	120	70%	---	---	48	53%	257	63%
Boston		44		57		31		122		11		32		297	
	Female	13	30%	19	33%	20	65%	51	42%	11	100%	18	56%	132	44%
	Male	31	70%	38	67%	11	35%	71	58%	---	---	14	44%	165	56%
STATEWIDE		381		353		164		808		25		346		2,077	
	Female	137	36%	137	39%	97	59%	253	31%	23	92%	159	46%	806	39%
	Male	244	64%	216	61%	67	41%	555	69%	2	8%	187	54%	1,271	61%

Note: The summation of relative percentages may not equal 100% due to rounding-off.

- Statewide, 58% of all consumers in placement were White, 20% were Black, 2% were Asian, less than 1% were Native American, and 5% were multi-racial. Race could not be determined for 14% of the placement population. These high values may be attributable to the large number of Hispanic/Latino(a) consumers (26%) in placement, who may not self-identify with any of the racial categories. (Table 7G below)

TABLE 7G. CONSUMERS IN PLACEMENT - RACE & HISPANIC/LATINO(A) ORIGIN: FY'2009, End of 3RD QUARTER (3/31/09)

Race:	DCF Geographic Region														Total			
	West		Central		Northeast		Metro		Southeast		Boston		Adoption Contracts ^(a)				Other ^(b)	
	No.	%	No.	%	No.	%	No.	%	No.	%	No.	%	No.	%	No.	%	No.	%
White	1,317	62%	962	65%	1,094	61%	909	66%	1,410	68%	296	23%	101	44%	5	9%	6,094	58%
Black	309	15%	167	11%	199	11%	270	20%	368	18%	721	55%	41	18%	33	61%	2,108	20%
Asian	9	*	22	1%	90	5%	28	2%	12	1%	22	2%	4	2%	16	30%	203	2%
Native American	3	*	5	*	1	*	2	*	10	*	1	*	1	*	---	---	23	*
Other [^]	---	---	3	*	1	*	1	*	1	*	---	---	---	---	---	---	6	*
Multi-Racial	113	5%	75	5%	103	6%	59	4%	130	6%	41	3%	29	13%	---	---	550	5%
Unable to Determine	371	17%	248	17%	306	17%	102	7%	133	6%	224	17%	53	23%	---	---	1,437	14%
Missing	2	*	1	*	---	---	---	---	---	---	---	---	---	---	---	---	3	*
Total	2,124	100%	1,483	100%	1,794	100%	1,371	100%	2,064	100%	1,305	100%	229	100%	54	100%	10,424	100%
Hispanic/Latino(a) Origin:																		
Hispanic/Latino(a)	715	34%	433	29%	617	34%	185	13%	306	15%	344	26%	65	28%	8	15%	2,673	26%
Not Hispanic/Latino(a)	1,297	61%	972	66%	1,119	62%	1,119	82%	1,657	80%	913	70%	143	62%	43	80%	7,263	70%
Unable to Determine	110	5%	77	5%	57	3%	67	5%	100	5%	48	4%	21	9%	---	---	480	5%
Missing	2	*	1	*	1	*	---	---	1	*	---	---	---	---	3	6%	8	*
Total	2,124	100%	1,483	100%	1,794	100%	1,371	100%	2,064	100%	1,305	100%	229	100%	54	100%	10,424	100%

* = Less than 1% after rounding-off. Note: The summation of relative percentages may not equal 100% due to rounding-off. [^]Includes Native Hawaiian and Other Pacific Islanders.

^(a) Licensed private adoption agencies that contract with DCF to provide case management services. ^(b) Primarily families served through Central Office contracts.

Service Plan Goals for Consumers in Placement

- The most prominent service plan goals of consumers in placement were Family Reunification (34% of all consumers in placement), Adoption (23%), and Alternative Planned Permanent Living Arrangement¹ (APPLA) (21%). (Table 7H below)

TABLE 7H. CONSUMERS IN PLACEMENT - SERVICE PLAN GOALS: FY'2009, End of 3RD QUARTER (3/31/09)

Service Plan Goals	DCF Geographic Region														Total			
	West		Central		Northeast		Metro		Southeast		Boston		Adoption Contracts ^(a)				Other ^(b)	
	No.	%	No.	%	No.	%	No.	%	No.	%	No.	%	No.	%	No.	%	No.	%
Family Reunification	722	34%	537	36%	576	32%	456	33%	819	40%	419	32%	1	*	1	2%	3,531	34%
Adoption	539	25%	417	28%	362	20%	254	19%	411	20%	237	18%	218	95%	---	---	2,438	23%
APPLA ⁽¹⁾	376	18%	253	17%	458	26%	325	24%	427	21%	352	27%	1	*	11	20%	2,203	21%
Permanent Care with Kin Guardianship	167	8%	86	6%	155	9%	133	10%	156	8%	76	6%	---	---	2	4%	775	7%
Stabilization of Family	114	5%	75	5%	115	6%	93	7%	111	5%	89	7%	5	2%	---	---	602	6%
Other ^(c)	109	5%	74	5%	80	4%	70	5%	106	5%	79	6%	---	---	---	---	518	5%
Unspecified as of run-date	---	---	1	*	---	---	---	---	---	---	---	---	---	---	15	28%	16	*
Unspecified as of run-date	97	5%	40	3%	48	3%	40	3%	34	2%	53	4%	4	2%	25	46%	341	3%
Total	2,124	100%	1,483	100%	1,794	100%	1,371	100%	2,064	100%	1,305	100%	229	100%	54	100%	10,424	100%

^(c) "Old" taxonomy.

Lengths of Stay

¹ Goal is for youth 16 years or older to establish a lifelong permanent connection, as well as to obtain life skills training and a stable living environment that will support youth development into and through adulthood. This goal includes youths who will be transitioned to the Departments of Mental Health, Developmental Services, and Public Health upon turning 22 years old.

- On 3/31/2009, 36% of the statewide placement population had a length of stay of 2 or more years¹, 21% had been in continuous care between 1 and 2 years, and 43% for 1 year or less. (Table 7I below)
- Tables 7J and 7K display the race and Hispanic origin of consumers in placement by their length of time in continuous care. A greater proportion of Black consumers were in care for more than two years as compared to other races (39% for Black vs. 36% for White, 35% for Hispanic, 33% for Unable to Determine, 31% for Multi-Racial).

TABLE 7I. CONSUMERS IN PLACEMENT - CONTINUOUS TIME IN CARE: FY'2009, End of 3RD QUARTER (3/31/09)

Continuous Time in Care	DCF Geographic Region												Total					
	West		Central		Northeast		Metro		Southeast		Boston			Adoption				
	No.	%	No.	%	No.	%	No.	%	No.	%	No.	%	Contracts ^(a)	Other ^(b)	No.	%		
(.5 yr or less)	491	23%	419	28%	433	24%	347	25%	543	26%	339	26%	6	3%	3	6%	2,581	25%
(> .5 - 1 yr)	385	18%	277	19%	299	17%	263	19%	411	20%	218	17%	15	7%	16	30%	1,884	18%
(> 1 - 1.5 yrs)	266	13%	191	13%	211	12%	177	13%	235	11%	151	12%	32	14%	4	7%	1,267	12%
(> 1.5 - 2 yrs)	211	10%	114	8%	149	8%	117	9%	187	9%	144	11%	25	11%	5	9%	952	9%
(> 2 - 4 yrs)	446	21%	278	19%	322	18%	256	19%	388	19%	262	20%	110	48%	17	31%	2,079	20%
> 4 yrs	325	15%	204	14%	380	21%	211	15%	300	15%	191	15%	41	18%	9	17%	1,661	16%
Total	2,124	100%	1,483	100%	1,794	100%	1,371	100%	2,064	100%	1,305	100%	229	100%	54	100%	10,424	100%

* = Less than 1% after rounding-off. Note: The summation of relative percentages may not equal 100% due to rounding-off.

^(a) Licensed private adoption agencies that contract with DCF to provide case management services. ^(b) Primarily families served through Central Office contracts.

TABLE 7J. CONSUMERS IN PLACEMENT BY RACE AND CONTINUOUS TIME IN CARE: FY'09, End of 3RD QTR

Continuous Time in Care	Race of Consumers														Total			
	White		Black		Asian		Native American		Other ⁽¹⁾		Multi-Racial		Unable to Determine				Unknown	
	No.	%	No.	%	No.	%	No.	%	No.	%	No.	%	No.	%	No.	%	No.	%
(.5 yr or less)	1,542	25%	461	22%	62	31%	5	22%	1	17%	120	22%	388	27%	2	67%	2,581	25%
(>.5 - 1 yr)	1,105	18%	370	18%	35	17%	6	26%	1	17%	114	21%	253	18%	---	---	1,884	18%
(>1 - 1.5 yrs)	715	12%	255	12%	23	11%	2	9%	1	17%	88	16%	183	13%	---	---	1,267	12%
(>1.5 - 2 yrs)	534	9%	202	10%	22	11%	3	13%	---	---	57	10%	133	9%	1	33%	952	9%
(>2 - 4 yrs)	1,232	20%	415	20%	35	17%	4	17%	3	50%	110	20%	280	19%	---	---	2,079	20%
> 4yrs	966	16%	405	19%	26	13%	3	13%	---	---	61	11%	200	14%	---	---	1,661	16%
Total	6,094	100%	2,108	100%	203	100%	23	100%	6	100%	550	100%	1,437	100%	3	100%	10,424	100%

⁽¹⁾ Includes Native Hawaiian and Other Pacific Islanders.

TABLE 7K. CONSUMERS IN PLACEMENT BY HISPANIC ORIGIN & CONTINUOUS TIME IN CARE: FY'09, End of 3RD QTR

Continuous Time in Care	Hispanic/Latino(a) Origin ⁽¹⁾ of Consumers								Total	
	Hispanic/ Latino(a)		Not Hispanic /Latino(a)		Unable to Determine		Unknown			
	No.	%	No.	%	No.	%	No.	%	No.	%
(.5 yr or less)	698	26%	1,760	24%	118	25%	5	63%	2,581	25%
(>.5 - 1 yr)	453	17%	1,341	18%	89	19%	1	13%	1,884	18%
(>1 - 1.5 yrs)	339	13%	857	12%	71	15%	---	---	1,267	12%
(>1.5 - 2 yrs)	250	9%	660	9%	42	9%	---	---	952	9%
(>2 - 4 yrs)	529	20%	1,446	20%	102	21%	2	25%	2,079	20%
> 4yrs	404	15%	1,199	17%	58	12%	---	---	1,661	16%
Total	2,673	100%	7,263	100%	480	100%	8	100%	10,424	100%

⁽¹⁾ Consumers of any race who self-identify as being of Hispanic origin.

¹ Length of stay in placement, as measured by a "point-in-time snapshot" of consumers residing in care, is not representative of all individuals who spend time in care during some specified period. It is biased because consumers in continuous long-term placement are over-represented in "snapshot" counts while many others who enter and leave placement quickly are not counted at all.

- Within the 12-month period ending 3/31/09, 16,720 child consumers were in placement for at least 1-day. Of these, 12,270 (73%) had a continuous placement of at least 6-months. Eighty-eight percent (88%) of 18-or-older consumers were in placement greater than 6-months. (Table 8A below)

TABLE 8A. CONSUMERS IN PLACEMENT - TIME IN PLACEMENT BY AGE: YEAR ENDING 3/31/2009

DCF Geographic Region	Age Group	Total Children in Placement	Children in Placement > 6 Months	% of Total
West		3,646	2,658	73%
	(0 - 2 yrs)	623	387	62%
	(3 - 5 yrs)	492	379	77%
	(6 - 11 yrs)	789	591	75%
	(12 - 17 yrs)	1,478	1,063	72%
	18 or older	264	238	90%
Central		2,527	1,859	74%
	(0 - 2 yrs)	386	248	64%
	(3 - 5 yrs)	359	273	76%
	(6 - 11 yrs)	589	445	76%
	(12 - 17 yrs)	1,011	738	73%
	18 or older	182	155	85%
Northeast		2,730	1,960	72%
	(0 - 2 yrs)	370	220	59%
	(3 - 5 yrs)	319	223	70%
	(6 - 11 yrs)	503	353	70%
	(12 - 17 yrs)	1,291	947	73%
	18 or older	247	217	88%
Metro		2,288	1,639	72%
	(0 - 2 yrs)	317	197	62%
	(3 - 5 yrs)	241	177	73%
	(6 - 11 yrs)	424	309	73%
	(12 - 17 yrs)	1,091	762	70%
	18 or older	215	194	90%
Southeast		3,197	2,383	75%
	(0 - 2 yrs)	518	364	70%
	(3 - 5 yrs)	453	345	76%
	(6 - 11 yrs)	611	448	73%
	(12 - 17 yrs)	1,374	1,004	73%
	18 or older	241	222	92%
Boston		1,910	1,376	72%
	(0 - 2 yrs)	296	178	60%
	(3 - 5 yrs)	209	163	78%
	(6 - 11 yrs)	323	222	69%
	(12 - 17 yrs)	882	643	73%
	18 or older	200	170	85%
Adoption Contracts ^(a)		315	314	100%
	(0 - 2 yrs)	41	40	98%
	(3 - 5 yrs)	66	66	100%
	(6 - 11 yrs)	153	153	100%
	(12 - 17 yrs)	55	55	100%
Other ^(b)		107	81	76%
	(0 - 2 yrs)	7	6	86%
	(3 - 5 yrs)	5	5	100%
	(6 - 11 yrs)	14	11	79%
	(12 - 17 yrs)	50	37	74%
	18 or older	31	22	71%
STATEWIDE		16,720	12,270	73%
	(0 - 2 yrs)	2,558	1,640	64%
	(3 - 5 yrs)	2,144	1,631	76%
	(6 - 11 yrs)	3,406	2,532	74%
	(12 - 17 yrs)	7,232	5,249	73%
	18 or older	1,380	1,218	88%

^(a) Licensed private adoption agencies that contract with DCF to provide case management services.

^(b) Includes primarily families served through Central Office contracts.

- Table 8B shows that 75% of males and 72% of females were in a continuous placement for greater than 6-months during the 12-month period ending 3/31/09.

TABLE 8B. CONSUMERS IN PLACEMENT - TIME IN PLACEMENT BY GENDER: YEAR ENDING 3/31/2009

DCF Geographic Region	Gender	Total Children in Placement	Children in Placement > 6 Months	% of Total
West		3,646	2,658	73%
	Female	1,811	1,302	72%
	Male	1,835	1,356	74%
Central		2,527	1,859	74%
	Female	1,235	896	73%
	Male	1,292	963	75%
Northeast		2,730	1,960	72%
	Female	1,295	903	70%
	Male	1,435	1,057	74%
Metro		2,288	1,639	72%
	Female	1,121	791	71%
	Male	1,167	848	73%
Southeast		3,197	2,383	75%
	Female	1,526	1,130	74%
	Male	1,671	1,253	75%
Boston		1,910	1,376	72%
	Female	992	687	69%
	Male	918	689	75%
Adoption Contracts ^(a)		315	314	100%
	Female	141	140	99%
	Male	174	174	100%
Other ^(b)		107	81	76%
	Female	50	42	84%
	Male	57	39	68%
STATEWIDE		16,720	12,270	73%
	Female	8,171	5,891	72%
	Male	8,549	6,379	75%

^(a) Licensed private adoption agencies that contract with DCF to provide case management services.

^(b) Includes primarily families served through Central Office contracts.

- Seventy-five percent (75%) of Multi-Racial children were in placement greater than 6-months, whereas 57% of Asian children were in placement greater than 6-months during the 12-month period ending 3/31/09. (Table 8C below)

TABLE 8C. CONSUMERS IN PLACEMENT - TIME IN PLACEMENT BY RACE - YEAR ENDING 3/31/2009

DCF Geographic Region	Race	Total Children in Placement	Children in Placement > 6 Months	% of Total
West		3,646	2,658	73%
	White	2,262	1,713	76%
	Black	499	358	72%
	Asian	16	5	31%
	Native American	4	4	100%
	Other ^(c)	658	433	66%
	Multi-Racial	197	145	74%
	Missing	10	--	--
Central		2,527	1,859	74%
	White	1,660	1,244	75%
	Black	262	190	73%
	Asian	32	13	41%
	Native American	8	6	75%
	Other ^(c)	432	315	73%
	Multi-Racial	128	90	70%
	Missing	5	1	20%
Northeast		2,730	1,960	72%
	White	1,670	1,197	72%
	Black	234	175	75%
	Asian	133	83	62%
	Native American	4	3	75%
	Other ^(c)	529	382	72%
	Multi-Racial	152	120	79%
	Missing	8	--	--
Metro		2,288	1,639	72%
	White	1,493	1,091	73%
	Black	419	293	70%
	Asian	45	22	49%
	Native American	4	2	50%
	Other ^(c)	219	146	67%
	Multi-Racial	103	85	83%
	Missing	5	--	--
Southeast		3,197	2,383	75%
	White	2,147	1,623	76%
	Black	564	412	73%
	Asian	17	10	59%
	Native American	18	12	67%
	Other ^(c)	233	163	70%
	Multi-Racial	211	162	77%
	Missing	7	1	14%
Boston		1,910	1,376	72%
	White	428	310	72%
	Black	1,003	735	73%
	Asian	49	32	65%
	Native American	2	2	100%
	Other ^(c)	362	249	69%
	Multi-Racial	61	47	77%
	Missing	5	1	20%
Adoption Contracts ^(a)		315	314	100%
	White	144	144	100%
	Black	54	54	100%
	Asian	8	8	100%
	Native American	1	1	100%
	Other ^(c)	75	74	99%
	Multi-Racial	33	33	100%
Other ^(b)		107	81	76%
	White	27	25	93%
	Black	37	30	81%
	Asian	24	12	50%
	Other ^(c)	16	12	75%
	Multi-Racial	2	2	100%
	Missing	1	--	--
STATEWIDE		16,720	12,270	73%
	White	9,831	7,347	75%
	Black	3,072	2,247	73%
	Asian	324	185	57%
	Native American	41	30	73%
	Other ^(c)	2,524	1,774	70%
	Multi-Racial	887	684	77%
	Missing	41	3	7%

^{(a)(b)} Licensed private adoption agencies that contract with DCF to provide case management services. ^(c) Includes Native Hawaiian and Other Pacific Islanders.

- Hispanic/Latino(a) children were no more likely to be in placement greater than 6-months during the 12-month period ending 3/31/09 than non-Hispanic/Latino(a) children. (Table 8D below)

TABLE 8D. CONSUMERS IN PLACEMENT - TIME IN PLACEMENT BY HISPANIC ORIGIN - YEAR ENDING 3/09

DCF Geographic Region	Hispanic / Latino(a) Origin	Total Children in Placement	Children in Placement > 6 Months	% of Total
West		3,646	2,658	73%
	Hispanic/Latino(a)	1,254	901	72%
	Not Hispanic/Latino(a)	2,189	1,615	74%
	Unable to Determine	190	142	75%
	Missing	13	---	---
Central		2,527	1,859	74%
	Hispanic/Latino(a)	753	544	72%
	Not Hispanic/Latino(a)	1,638	1,215	74%
	Unable to Determine	130	100	77%
	Missing	6	---	---
Northeast		2,730	1,960	72%
	Hispanic/Latino(a)	983	711	72%
	Not Hispanic/Latino(a)	1,650	1,180	72%
	Unable to Determine	85	69	81%
	Missing	12	---	---
Metro		2,288	1,639	72%
	Hispanic/Latino(a)	355	259	73%
	Not Hispanic/Latino(a)	1,798	1,294	72%
	Unable to Determine	126	86	68%
	Missing	9	---	---
Southeast		3,197	2,383	75%
	Hispanic/Latino(a)	483	324	67%
	Not Hispanic/Latino(a)	2,553	1,942	76%
	Unable to Determine	154	117	76%
	Missing	7	---	---
Boston		1,910	1,376	72%
	Hispanic/Latino(a)	542	364	67%
	Not Hispanic/Latino(a)	1,282	947	74%
	Unable to Determine	82	65	79%
	Missing	4	---	---
Adoption Contracts ^(a)		315	314	100%
	Hispanic/Latino(a)	94	94	100%
	Not Hispanic/Latino(a)	199	198	99%
	Unable to Determine	22	22	100%
Other ^(b)		107	81	76%
	Hispanic/Latino(a)	23	18	78%
	Not Hispanic/Latino(a)	76	57	75%
	Unable to Determine	3	3	100%
	Missing	5	3	60%
STATEWIDE		16,720	12,270	73%
	Hispanic/Latino(a)	4,487	3,215	72%
	Not Hispanic/Latino(a)	11,385	8,448	74%
	Unable to Determine	792	604	76%
	Missing	56	3	5%

^(a) Licensed private adoption agencies that contract with DCF to provide case management services.

^(b) Includes primarily families served through Central Office contracts.

Foster Care Reviews

- Federal and State laws require that cases involving children in out-of-home placement be reviewed periodically and no less frequently than once every six months. During FY'2009 (7/1/08 – 6/30/09), 11,422 cases required review. Of these, 11,243 (98%) received timely reviews as required. Foster Care Reviews often involve more than one child. As such, 19,763 children required review. Of these, 19,433 (98%) received timely reviews as required. (Table 9A below)

TABLE 9A. FOSTER CARE REVIEWS CONDUCTED: FY'2009 (7/1/2008 - 6/30/2009)

DCF Geographic Region	Cases Requiring Review*	Cases Reviewed	% Reviewed (Cases)	Children Requiring Review*	Children Reviewed	% Reviewed (Children)
West	2,401	2,373	99%	4,393	4,341	99%
Central	1,657	1,622	98%	3,032	2,963	98%
Northeast	1,960	1,920	98%	3,459	3,375	98%
Metro	1,612	1,585	98%	2,499	2,457	98%
Southeast	2,304	2,282	99%	3,772	3,738	99%
Boston	1,297	1,273	98%	2,286	2,247	98%
Adoption Contracts ^(a)	144	141	98%	257	247	96%
Other ^(b)	47	47	100%	65	65	100%
STATEWIDE	11,422	11,243	98%	19,763	19,433	98%

^(a) Licensed private adoption agencies that contract with DCF to provide case management services.

^(b) Includes primarily families served through Central Office contracts.

- Children removed from their homes are to be reunified as soon as it is safely possible. DCF's reunification target for FY'2009 was 77.2% (National Standard of 75.2% or higher was 102.5% achieved)
 - Actual performance was 77.1%: 99.8% of target was achieved.
 - Asian Children = 86.1%
 - Black Children = 75.3%
 - Hispanic/Latino(a) = 81.4%
 - White Children = 76.2%

Consumers Entering and Leaving Placement During the Quarter

Entries to Placement

- Of those consumers who entered a placement setting during the 3rd Quarter of FY'2009, 66% were first-time entrants and 34% were re-entrants.¹ Across the state, 71% of all entrants were placed in foster care, 25% were placed in congregate care,² and 4% were placed in non-referral locations.³
- First-time entrants to placement were more likely than re-entrants to be placed in foster care. Seventy-seven percent (77%) of first-time entrants and 59% of re-entrants were placed in foster care. Conversely, 33% of re-entrants and 20% of first-time entrants were placed in congregate care.

¹ Re-entrants are consumers who had been in placement at some point in the past.

² Congregate Care includes group home, residential treatment, and short-term residential placement.

³ Non-referral locations include hospitals, nursing homes, & placements supervised by other state agencies.

Exits from Placement

- Statewide, 64% of the consumers leaving a placement setting were returned home. Nine percent (9%) of consumers leaving placement were adopted, 10% were emancipated, and 6% were granted guardianships. With the exception of 18-or-older youth, the majority of children return home. (Table 10A below)

TABLE 10A. CONSUMERS LEAVING PLACEMENT DURING THE QUARTER BY AGE: FY'2009, 3RD QUARTER

DCF												Total	
Geographic Region	Reason Placement Ended	0 - 2 yrs		3 - 5 yrs		6 - 11 yrs		12 - 17 yrs		18 or older		No.	%
		No.	%	No.	%	No.	%	No.	%	No.	%		
West		66		73		95		146		61		441	
	Child Returned Home	36	55%	38	52%	60	63%	112	77%	3	5%	249	56%
	Child 18 or Older	---	---	---	---	---	---	---	---	55	90%	55	12%
	Consumer Adopted	12	18%	20	27%	10	11%	4	3%	1	2%	47	11%
	Custody to Other Individual	15	23%	13	18%	9	9%	13	9%	---	---	50	11%
	Guardianship	2	3%	2	3%	10	11%	10	7%	1	2%	25	6%
	Unspecified / Missing	1	2%	---	---	5	5%	7	5%	1	2%	14	3%
	Custody to Other Agency	---	---	---	---	1	1%	---	---	---	---	1	*
Central		54		47		83		117		28		329	
	Child Returned Home	41	76%	31	66%	59	71%	91	78%	3	11%	225	68%
	Child 18 or Older	---	---	---	---	---	---	---	---	21	75%	21	6%
	Consumer Adopted	8	15%	8	17%	10	12%	6	5%	---	---	32	10%
	Custody to Other Individual	1	2%	2	4%	---	---	8	7%	1	4%	12	4%
	Guardianship	3	6%	6	13%	10	12%	8	7%	---	---	27	8%
	Unspecified / Missing	1	2%	---	---	4	5%	3	3%	2	7%	10	3%
	Custody to Other Agency	---	---	---	---	---	---	1	1%	1	4%	2	1%
Northeast		50		46		59		173		44		372	
	Child Returned Home	30	60%	30	65%	49	83%	146	84%	4	9%	259	70%
	Child 18 or Older	---	---	---	---	---	---	---	---	35	80%	35	9%
	Consumer Adopted	10	20%	10	22%	2	3%	2	1%	---	---	24	6%
	Custody to Other Individual	10	20%	1	2%	3	5%	7	4%	1	2%	22	6%
	Guardianship	---	---	5	11%	4	7%	4	2%	---	---	13	3%
	Unspecified / Missing	---	---	---	---	1	2%	11	6%	4	9%	16	4%
	Custody to Other Agency	---	---	---	---	---	---	2	1%	---	---	2	1%
	Consumer Deceased	---	---	---	---	---	---	1	1%	---	---	1	*
Metro		44		36		51		136		46		313	
	Child Returned Home	27	61%	17	47%	26	51%	123	90%	13	28%	206	66%
	Child 18 or Older	---	---	---	---	---	---	1	1%	29	63%	30	10%
	Consumer Adopted	9	20%	8	22%	11	22%	2	1%	---	---	30	10%
	Custody to Other Individual	6	14%	4	11%	3	6%	4	3%	1	2%	18	6%
	Guardianship	2	5%	7	19%	10	20%	3	2%	---	---	22	7%
	Unspecified / Missing	---	---	---	---	1	2%	3	2%	2	4%	6	2%
	Custody to Other Agency	---	---	---	---	---	---	---	---	1	2%	1	*
Southeast		58		47		64		178		45		392	
	Child Returned Home	36	62%	29	62%	45	70%	148	83%	5	11%	263	67%
	Child 18 or Older	---	---	---	---	---	---	---	---	38	84%	38	10%
	Consumer Adopted	16	28%	11	23%	8	13%	5	3%	---	---	40	10%
	Custody to Other Individual	1	2%	2	4%	1	2%	5	3%	---	---	9	2%
	Guardianship	4	7%	4	9%	8	13%	10	6%	---	---	26	7%
	Unspecified / Missing	1	2%	1	2%	2	3%	10	6%	2	4%	16	4%
Boston		42		28		57		125		43		295	
	Child Returned Home	23	55%	14	50%	31	54%	96	77%	8	19%	172	58%
	Child 18 or Older	---	---	---	---	---	---	1	1%	30	70%	31	11%
	Consumer Adopted	6	14%	5	18%	1	2%	---	---	---	---	12	4%
	Custody to Other Individual	8	19%	5	18%	11	19%	11	9%	---	---	35	12%
	Guardianship	3	7%	4	14%	10	18%	9	7%	---	---	26	9%
	Unspecified / Missing	2	5%	---	---	4	7%	6	5%	5	12%	17	6%
	Custody to Other Agency	---	---	---	---	---	---	2	2%	---	---	2	1%
Other ^(a)		---		---		---		---		3		3	
	Custody to Other Individual	---	---	---	---	---	---	---	---	2	67%	2	67%
	Unspecified / Missing	---	---	---	---	---	---	---	---	1	33%	1	33%
STATEWIDE		314		277		409		875		270		2,145	
	Child Returned Home	193	61%	159	57%	270	66%	716	82%	36	13%	1,374	64%
	Child 18 or Older	---	---	---	---	---	---	2	*	208	77%	210	10%
	Consumer Adopted	61	19%	62	22%	42	10%	19	2%	1	*	185	9%
	Custody to Other Individual	41	13%	27	10%	27	7%	48	5%	5	2%	148	7%
	Guardianship	14	4%	28	10%	52	13%	44	5%	1	0%	139	6%
	Unspecified / Missing	5	2%	1	*	17	4%	40	5%	17	6%	80	4%
	Custody to Other Agency	---	---	---	---	1	*	5	1%	2	1%	8	*
	Consumer Deceased	---	---	---	---	---	---	1	*	---	---	1	*

* = Less than 1% after rounding-off. ^(a) Includes primarily families served through Central Office contracts.

- Statewide, 65% of males and 63% of females leaving a placement setting were returned home. Eleven percent (11%) of females and 9% of males were emancipated. (Table 10B below)

TABLE 10B. CONSUMERS LEAVING PLACEMENT DURING THE QTR BY GENDER: FY'09, 3RD QTR

DCF Geographic Region	Reason Placement Ended	Female		Male		Total	
		No.	%	No.	%	No.	%
West		228		213		441	
	Child Returned Home	129	57%	120	56%	249	56%
	Child 18 or Older	26	11%	29	14%	55	12%
	Consumer Adopted	23	10%	24	11%	47	11%
	Custody to Other Individual	31	14%	19	9%	50	11%
	Guardianship	11	5%	14	7%	25	6%
	Unspecified / Missing	8	4%	6	3%	14	3%
	Custody to Other Agency	---	---	1	*	1	*
Central		161		168		329	
	Child Returned Home	105	65%	120	71%	225	68%
	Child 18 or Older	13	8%	8	5%	21	6%
	Consumer Adopted	17	11%	15	9%	32	10%
	Custody to Other Individual	8	5%	4	2%	12	4%
	Guardianship	13	8%	14	8%	27	8%
	Unspecified / Missing	4	2%	6	4%	10	3%
	Custody to Other Agency	1	1%	1	1%	2	1%
Northeast		187		185		372	
	Child Returned Home	125	67%	134	72%	259	70%
	Child 18 or Older	20	11%	15	8%	35	9%
	Consumer Adopted	16	9%	8	4%	24	6%
	Custody to Other Individual	10	5%	12	6%	22	6%
	Guardianship	5	3%	8	4%	13	3%
	Unspecified / Missing	9	5%	7	4%	16	4%
	Custody to Other Agency	1	1%	1	1%	2	1%
	Consumer Deceased	1	1%	---	---	1	*
Metro		154		159		313	
	Child Returned Home	98	64%	108	68%	206	66%
	Child 18 or Older	21	14%	9	6%	30	10%
	Consumer Adopted	10	6%	20	13%	30	10%
	Custody to Other Individual	10	6%	8	5%	18	6%
	Guardianship	11	7%	11	7%	22	7%
	Unspecified / Missing	4	3%	2	1%	6	2%
	Custody to Other Agency	---	---	1	1%	1	*
Southeast		207		185		392	
	Child Returned Home	142	69%	121	65%	263	67%
	Child 18 or Older	22	11%	16	9%	38	10%
	Consumer Adopted	14	7%	26	14%	40	10%
	Custody to Other Individual	6	3%	3	2%	9	2%
	Guardianship	15	7%	11	6%	26	7%
	Unspecified / Missing	8	4%	8	4%	16	4%
Boston		158		137		295	
	Child Returned Home	88	56%	84	61%	172	58%
	Child 18 or Older	18	11%	13	9%	31	11%
	Consumer Adopted	6	4%	6	4%	12	4%
	Custody to Other Individual	22	14%	13	9%	35	12%
	Guardianship	15	9%	11	8%	26	9%
	Unspecified / Missing	8	5%	9	7%	17	6%
	Custody to Other Agency	1	1%	1	1%	2	1%
Other^(a)		---		3		3	
	Custody to Other Individual	---	---	2	67%	2	67%
	Unspecified / Missing	---	---	1	33%	1	33%
STATEWIDE		1,095		1,050		2,145	
	Child Returned Home	687	63%	687	65%	1,374	64%
	Child 18 or Older	120	11%	90	9%	210	10%
	Consumer Adopted	86	8%	99	9%	185	9%
	Custody to Other Individual	87	8%	61	6%	148	7%
	Guardianship	70	6%	69	7%	139	6%
	Unspecified / Missing	41	4%	39	4%	80	4%
	Custody to Other Agency	3	*	5	*	8	*
	Consumer Deceased	1	*	---	---	1	*

* = Less than 1% after rounding-off.

^(a) Includes primarily families served through Central Office contracts.

- While 73% of Asian and 64% of White children leaving a placement setting returned home, only 56% of Black children returned home. (Table 10C below)

TABLE 10C. CONSUMERS LEAVING PLACEMENT DURING THE QUARTER BY RACE: FY'2009, 3RD QUARTER

DCF Geographic Region	Reason Placement Ended	White		Black		Asian		Native American		Other [^]		Multi-Racial		Unable to Determine		Total	
		No.	%	No.	%	No.	%	No.	%	No.	%	No.	%	No.	%	No.	%
West		255		62		3		---		1		24		96		441	
	Child Returned Home	134	53%	34	55%	2	67%	---	---	1	100%	15	63%	63	66%	249	56%
	Child 18 or Older	36	14%	5	8%	---	---	---	---	---	---	2	8%	12	13%	55	12%
	Consumer Adopted	32	13%	1	2%	---	---	---	---	---	---	2	8%	12	13%	47	11%
	Custody to Other Individual	27	11%	14	23%	---	---	---	---	---	---	5	21%	4	4%	50	11%
	Guardianship	17	7%	4	6%	---	---	---	---	---	---	---	---	4	4%	25	6%
	Unspecified / Missing	8	3%	4	6%	1	33%	---	---	---	---	---	---	1	1%	14	3%
	Custody to Other Agency	1	*	---	---	---	---	---	---	---	---	---	---	---	---	1	*
Central		211		27		10		3		---		15		63		329	
	Child Returned Home	147	70%	14	52%	3	30%	---	---	---	---	10	67%	51	81%	225	68%
	Child 18 or Older	16	8%	3	11%	---	---	---	---	---	---	1	7%	1	2%	21	6%
	Consumer Adopted	16	8%	4	15%	4	40%	---	---	---	---	2	13%	6	10%	32	10%
	Custody to Other Individual	10	5%	---	---	---	---	1	33%	---	---	---	---	1	2%	12	4%
	Guardianship	11	5%	5	19%	3	30%	2	67%	---	---	2	13%	4	6%	27	8%
	Unspecified / Missing	9	4%	1	4%	---	---	---	---	---	---	---	---	---	---	10	3%
	Custody to Other Agency	2	1%	---	---	---	---	---	---	---	---	---	---	---	---	2	1%
Northeast		213		18		23		2		1		16		99		372	
	Child Returned Home	149	70%	10	56%	19	83%	1	50%	1	100%	14	88%	65	66%	259	70%
	Child 18 or Older	21	10%	2	11%	2	9%	1	50%	---	---	---	---	9	9%	35	9%
	Consumer Adopted	20	9%	1	6%	---	---	---	---	---	---	---	---	3	3%	24	6%
	Custody to Other Individual	12	6%	3	17%	---	---	---	---	---	---	1	6%	6	6%	22	6%
	Guardianship	6	3%	1	6%	---	---	---	---	---	---	1	6%	5	5%	13	3%
	Unspecified / Missing	5	2%	1	6%	2	9%	---	---	---	---	---	---	8	8%	16	4%
	Custody to Other Agency	---	---	---	---	---	---	---	---	---	---	---	---	2	2%	2	1%
	Consumer Deceased	---	---	---	---	---	---	---	---	---	---	---	---	1	1%	1	*
Metro		194		57		5		---		---		13		44		313	
	Child Returned Home	124	64%	38	67%	4	80%	---	---	---	---	8	62%	32	73%	206	66%
	Child 18 or Older	17	9%	11	19%	---	---	---	---	---	---	---	---	2	5%	30	10%
	Consumer Adopted	24	12%	2	4%	---	---	---	---	---	---	3	23%	1	2%	30	10%
	Custody to Other Individual	13	7%	3	5%	---	---	---	---	---	---	1	8%	1	2%	18	6%
	Guardianship	12	6%	3	5%	---	---	---	---	---	---	---	---	7	16%	22	7%
	Unspecified / Missing	3	2%	---	---	1	20%	---	---	---	---	1	8%	1	2%	6	2%
	Custody to Other Agency	1	1%	---	---	---	---	---	---	---	---	---	---	---	---	1	*
Southeast		256		64		3		2		1		29		37		392	
	Child Returned Home	173	68%	38	59%	2	67%	2	100%	1	100%	22	76%	25	68%	263	67%
	Child 18 or Older	24	9%	7	11%	1	33%	---	---	---	---	1	3%	5	14%	38	10%
	Consumer Adopted	19	7%	13	20%	---	---	---	---	---	---	4	14%	4	11%	40	10%
	Custody to Other Individual	5	2%	2	3%	---	---	---	---	---	---	1	3%	1	3%	9	2%
	Guardianship	23	9%	3	5%	---	---	---	---	---	---	---	---	---	---	26	7%
	Unspecified / Missing	12	5%	1	2%	---	---	---	---	---	---	1	3%	2	5%	16	4%
Boston		78		153		7		1		---		6		50		295	
	Child Returned Home	50	64%	80	52%	7	100%	---	---	---	---	2	33%	33	66%	172	58%
	Child 18 or Older	5	6%	18	12%	---	---	1	100%	---	---	2	33%	5	10%	31	11%
	Consumer Adopted	3	4%	6	4%	---	---	---	---	---	---	---	---	3	6%	12	4%
	Custody to Other Individual	6	8%	24	16%	---	---	---	---	---	---	1	17%	4	8%	35	12%
	Guardianship	9	12%	16	10%	---	---	---	---	---	---	---	---	---	---	26	9%
	Unspecified / Missing	5	6%	7	5%	---	---	---	---	---	---	---	---	5	10%	17	6%
	Custody to Other Agency	---	---	2	1%	---	---	---	---	---	---	---	---	---	---	2	1%
Other^(a)		---		3		---		---		---		---		---		3	
	Custody to Other Individual	---	---	2	67%	---	---	---	---	---	---	---	---	---	---	2	67%
	Unspecified / Missing	---	---	1	33%	---	---	---	---	---	---	---	---	---	---	1	33%
STATEWIDE		1,207		384		51		8		3		103		389		2,145	
	Child Returned Home	777	64%	214	56%	37	73%	3	38%	3	100%	71	69%	269	69%	1374	64%
	Child 18 or Older	119	10%	46	12%	3	6%	2	25%	---	---	6	6%	34	9%	210	10%
	Consumer Adopted	114	9%	27	7%	4	8%	---	---	---	---	11	11%	29	7%	185	9%
	Custody to Other Individual	73	6%	48	13%	---	---	1	13%	---	---	9	9%	17	4%	148	7%
	Guardianship	78	6%	32	8%	3	6%	2	25%	---	---	4	4%	20	5%	139	6%
	Unspecified / Missing	42	3%	15	4%	4	8%	---	---	---	---	2	2%	17	4%	80	4%
	Custody to Other Agency	4	*	2	1%	---	---	---	---	---	---	---	---	2	1%	8	*
	Consumer Deceased	---	---	---	---	---	---	---	---	---	---	---	---	1	*	1	*

* = Less than 1% after rounding-off.

⁽¹⁾ Includes Native Hawaiian and Other Pacific Islanders.

^(a) Includes primarily families served through Central Office contracts.

- Sixty-nine percent (69%) of Hispanic/Latino(a) children leaving a placement setting returned home. (Table 10D below)

TABLE 10D. CONSUMERS LEAVING PLACEMENT DURING THE QTR BY HISPANIC/LATINO(A) ORIGIN: FY'2009, 3RD QTR

DCF Geographic Region	Reason Placement Ended	Hispanic / Latino(a)		Not Hispanic / Latino(a)		Unable to Determine		Missing		Total	
		No.	%	No.	%	No.	%	No.	%	No.	%
West		138		273		23		7		441	
	Child Returned Home	81	59%	149	55%	12	52%	7	100%	249	56%
	Child 18 or Older	18	13%	35	13%	2	9%	---	---	55	12%
	Consumer Adopted	17	12%	28	10%	2	9%	---	---	47	11%
	Custody to Other Individual	13	9%	35	13%	2	9%	---	---	50	11%
	Guardianship	3	2%	18	7%	4	17%	---	---	25	6%
	Unspecified / Missing	5	4%	8	3%	1	4%	---	---	14	3%
	Custody to Other Agency	1	1%	---	---	---	---	---	---	1	*
Central		99		213		15		2		329	
	Child Returned Home	75	76%	142	67%	6	40%	2	100%	225	68%
	Child 18 or Older	5	5%	16	8%	---	---	---	---	21	6%
	Consumer Adopted	6	6%	22	10%	4	27%	---	---	32	10%
	Custody to Other Individual	5	5%	7	3%	---	---	---	---	12	4%
	Guardianship	5	5%	17	8%	5	33%	---	---	27	8%
	Unspecified / Missing	2	2%	8	4%	---	---	---	---	10	3%
	Custody to Other Agency	1	1%	1	*	---	---	---	---	2	1%
Northeast		135		219		15		3		372	
	Child Returned Home	96	71%	151	69%	10	67%	2	67%	259	70%
	Child 18 or Older	12	9%	22	10%	---	---	1	33%	35	9%
	Consumer Adopted	4	3%	19	9%	1	7%	---	---	24	6%
	Custody to Other Individual	7	5%	15	7%	---	---	---	---	22	6%
	Guardianship	5	4%	5	2%	3	20%	---	---	13	3%
	Unspecified / Missing	8	6%	7	3%	1	7%	---	---	16	4%
	Custody to Other Agency	2	1%	---	---	---	---	---	---	2	1%
	Consumer Deceased	1	1%	---	---	---	---	---	---	1	*
Metro		44		246		23		---		313	
	Child Returned Home	32	73%	162	66%	12	52%	---	---	206	66%
	Child 18 or Older	4	9%	25	10%	1	4%	---	---	30	10%
	Consumer Adopted	1	2%	26	11%	3	13%	---	---	30	10%
	Custody to Other Individual	4	9%	13	5%	1	4%	---	---	18	6%
	Guardianship	3	7%	14	6%	5	22%	---	---	22	7%
	Unspecified / Missing	---	---	5	2%	1	4%	---	---	6	2%
	Custody to Other Agency	---	---	1	*	---	---	---	---	1	*
Southeast		44		332		15		1		392	
	Child Returned Home	30	68%	220	66%	12	80%	1	100%	263	67%
	Child 18 or Older	7	16%	29	9%	2	13%	---	---	38	10%
	Consumer Adopted	4	9%	35	11%	1	7%	---	---	40	10%
	Custody to Other Individual	---	---	9	3%	---	---	---	---	9	2%
	Guardianship	1	2%	25	8%	---	---	---	---	26	7%
	Unspecified / Missing	2	5%	14	4%	---	---	---	---	16	4%
Boston		86		199		8		2		295	
	Child Returned Home	61	71%	107	54%	3	38%	1	50%	172	58%
	Child 18 or Older	6	7%	23	12%	1	13%	1	50%	31	11%
	Consumer Adopted	5	6%	5	3%	2	25%	---	---	12	4%
	Custody to Other Individual	4	5%	29	15%	2	25%	---	---	35	12%
	Guardianship	3	3%	23	12%	---	---	---	---	26	9%
	Unspecified / Missing	7	8%	10	5%	---	---	---	---	17	6%
	Custody to Other Agency	---	---	2	1%	---	---	---	---	2	1%
Other ^(a)		1		2		---		---		3	
	Custody to Other Individual	---	---	2	100%	---	---	---	---	2	67%
	Unspecified / Missing	1	100%	---	---	---	---	---	---	1	33%
STATEWIDE		547		1,484		99		15		2,145	
	Child Returned Home	375	69%	931	63%	55	56%	13	87%	1,374	64%
	Child 18 or Older	52	10%	150	10%	6	6%	2	13%	210	10%
	Consumer Adopted	37	7%	135	9%	13	13%	---	---	185	9%
	Custody to Other Individual	33	6%	110	7%	5	5%	---	---	148	7%
	Guardianship	20	4%	102	7%	17	17%	---	---	139	6%
	Unspecified / Missing	25	5%	52	4%	3	3%	---	---	80	4%
	Custody to Other Agency	4	1%	4	*	---	---	---	---	8	*
	Consumer Deceased	1	*	---	---	---	---	---	---	1	*

* = Less than 1% after rounding-off. ^(a) Includes primarily families served through Central Office contracts.

Re-Entry to Placement

- DCF recognizes that all children who return home from out-of-home placement should be safely maintained at home. Even so, these children are at-risk of re-entry.
- In FY'2009, DCF was able to maintain 89.1% of the children who returned home safely at home for at least 12-months. DCF's target performance of 89.6% was 99% achieved.
 - All Children = 89.1%
 - Asian Children = 94.5%
 - Black Children = 88.8%
 - Hispanic/Latino(a) Children = 88.6%
 - White Children = 88.6%
- Sixteen percent (16%) of the children who returned home after leaving placement between 4/1/07 and 3/31/08 (discharge cohort), re-entered out-of-home care within 12-months of their reunification. (Table 11A below)
- Table 11A reveals that 17% of females and 16% of males re-entered out-of-home care within 12-months of their reunification.

**TABLE 11A. CONSUMERS RE-ENTERING OUT-OF-HOME CARE WITHIN 12 MONTHS OF REUNIFICATION
DISCHARGE COHORT: 4/1/07 - 3/31/08 - BY GENDER**

DCF Geographic Region	Gender	Children who Reunified with Their Families	Children Re-Entering Out-of-Home Care within 12 Months	%
West		994	180	18%
	Female	500	98	20%
	Male	494	82	17%
Central		566	90	16%
	Female	265	46	17%
	Male	301	44	15%
Northeast		758	113	15%
	Female	370	56	15%
	Male	388	57	15%
Metro		676	115	17%
	Female	338	57	17%
	Male	338	58	17%
Southeast		732	111	15%
	Female	353	50	14%
	Male	379	61	16%
Boston		428	69	16%
	Female	236	40	17%
	Male	192	29	15%
Adoption Contracts ^(a)		4	1	25%
	Female	2	---	---
	Male	2	1	50%
Other ^(b)		20	1	5%
	Female	9	---	---
	Male	11	1	9%
STATEWIDE		4,178	680	16%
	Female	2,073	347	17%
	Male	2,105	333	16%

^(a) Licensed private adoption agencies that contract with DCF to provide case management services.

^(b) Includes primarily families served through Central Office contracts.

- Seventeen percent (17%) of Black, White and Multi-Racial children who returned home after leaving placement, re-entered out-of-home care within 12-mos. of reunification. Asian children demonstrated significantly reduced re-entry rates (10%). (Table 11B)

**TABLE 11B. CONSUMERS RE-ENTERING OUT-OF-HOME CARE W/IN 12 MOS. OF REUNIFICATION: RACE
DISCHARGE COHORT: 4/1/07 - 3/31/08**

DCF Geographic Region	Race	Children who Reunified with Their Families	Children Re-Entering Out-of-Home Care within 12 Months	%
West		994	180	18%
	White	607	125	21%
	Black	128	29	23%
	Asian	6	---	---
	Other ^(c)	195	19	10%
	Multi-Racial	44	5	11%
	Missing	14	2	14%
Central		566	90	16%
	White	356	56	16%
	Black	69	9	13%
	Asian	2	---	---
	Native American	1	---	---
	Other ^(c)	115	22	19%
	Multi-Racial	20	3	15%
	Missing	3	---	---
Northeast		758	113	15%
	White	437	61	14%
	Black	62	8	13%
	Asian	55	5	9%
	Other ^(c)	171	33	19%
	Multi-Racial	29	6	21%
	Missing	4	---	---
Metro		676	115	17%
	White	418	73	17%
	Black	128	19	15%
	Asian	13	1	8%
	Other ^(c)	88	17	19%
	Multi-Racial	25	5	20%
	Missing	4	---	---
Southeast		732	111	15%
	White	503	71	14%
	Black	102	22	22%
	Asian	6	---	---
	Other ^(c)	84	10	12%
	Multi-Racial	35	8	23%
	Missing	2	---	---
Boston		428	69	16%
	White	96	17	18%
	Black	214	31	14%
	Asian	16	4	25%
	Other ^(c)	89	16	18%
	Multi-Racial	12	1	8%
	Missing	1	---	---
Adoption Contracts^(a)		4	1	25%
	White	1	---	---
	Other ^(c)	3	1	33%
Other^(b)		20	1	5%
	White	12	---	---
	Black	4	1	25%
	Other ^(c)	3	---	---
	Missing	1	---	---
STATEWIDE		4,178	680	16%
	White	2,430	403	17%
	Black	707	119	17%
	Asian	98	10	10%
	Native American	1	---	---
	Other ^(c)	748	118	16%
	Multi-Racial	165	28	17%
	Missing	29	2	7%

^(a) Licensed private adoption agencies that contract with DCF to provide case management services.

^(b) Includes primarily families served through Central Office contracts.

^(c) Includes Native Hawaiian and Other Pacific Islanders.

- Sixteen percent (16%) of children of Hispanic/Latino(a) origin who returned home after leaving placement, re-entered out-of-home care within 12-months of reunification. (Table 11C below)

**TABLE 11C. CONSUMERS RE-ENTERING OUT-OF-HOME CARE WITHIN 12 MONTHS OF REUNIFICATION
DISCHARGE COHORT: 4/1/07 - 3/31/08 - BY HISPANIC/LATINO(A) ORIGIN**

DCF Geographic Region	Hispanic / Latino(a) Origin	Children who Reunified with Their Families	Children Re-Entering Out-of-Home Care within 12 Months	%
West		994	180	18%
	Hispanic/Latino(a)	362	52	14%
	Not Hispanic/Latino(a)	579	120	21%
	Unable to Determine	38	7	18%
	Missing	15	1	7%
Central		566	90	16%
	Hispanic/Latino(a)	164	26	16%
	Not Hispanic/Latino(a)	361	59	16%
	Unable to Determine	36	5	14%
	Missing	5	---	---
Northeast		758	113	15%
	Hispanic/Latino(a)	286	42	15%
	Not Hispanic/Latino(a)	440	65	15%
	Unable to Determine	27	5	19%
	Missing	5	1	20%
Metro		676	115	17%
	Hispanic/Latino(a)	115	24	21%
	Not Hispanic/Latino(a)	528	88	17%
	Unable to Determine	26	3	12%
	Missing	7	---	---
Southeast		732	111	15%
	Hispanic/Latino(a)	110	21	19%
	Not Hispanic/Latino(a)	575	87	15%
	Unable to Determine	41	3	7%
	Missing	6	---	---
Boston		428	69	16%
	Hispanic/Latino(a)	126	20	16%
	Not Hispanic/Latino(a)	279	46	16%
	Unable to Determine	20	3	15%
	Missing	3	---	---
Adoption Contracts ^(a)		4	1	25%
	Hispanic/Latino(a)	2	---	---
	Unable to Determine	2	1	50%
Other ^(b)		20	1	5%
	Hispanic/Latino(a)	6	---	---
	Not Hispanic/Latino(a)	12	1	8%
	Missing	2	---	---
STATEWIDE		4,178	680	16%
	Hispanic/Latino(a)	1,171	185	16%
	Not Hispanic/Latino(a)	2,774	466	17%
	Unable to Determine	190	27	14%
	Missing	43	2	5%

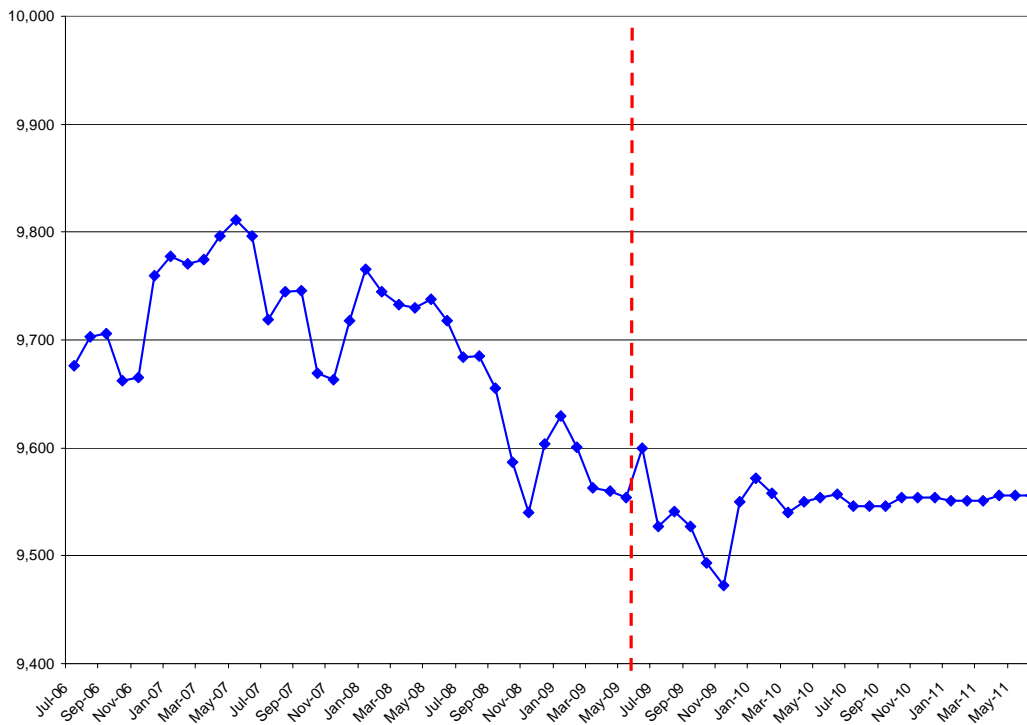
^(a) Licensed private adoption agencies that contract with DCF to provide case management services.

^(b) Includes primarily families served through Central Office contracts.

Adoptions

- DCF works to make sure that all children who are unable to return home (and for whom adoption is the most appropriate permanency plan) are adopted within 24 months of their entry into DCF care.
- In FY'2009, 36.6% of the children leaving placement for adoption, were adopted within 24-months of their entry into DCF care. DCF exceeded its target performance of 35.3% by 103%. This represents a 48.2% increase in performance since March 2007, when the agency's performance was 24.7%.
- DCF met the National Standard of 36.6% in FY'2009.
 - All Children = 36.6%
 - Asian Children = 15.5%
 - Black Children = 29.5%
 - Hispanic/Latino(a) Children = 30.3%
 - White Children = 37.8%
- Out of 2,437 consumers in placement with a goal of adoption on 3/31/09, 978 (40.1%) were legally free for adoption. Of these, 739 (75.6%) were matched to permanent families.
 - Of the 1,459 (59.9%) consumers who were not legally free for adoption, 867 (59.4%) were matched to permanent families.
- Figure 2 below reveals that Adoption Subsidy has been declining as the number of consumers aging out are starting to equal the number of new subsidy consumers. DCF anticipates that this will level off in FY'2011. The Department's emphasis on placing children with family, the increase in kinship care, and guardianship has impacted this as well.

FIGURE 2. CONSUMERS RECEIVING ADOPTION SUBSIDY



- There were 2,276 children with a Termination of Parental Rights (TPR) finalized before or during the 12-month period ending 3/31/09. Of these children who were “released for adoption,” 726 (32%) were adopted during the reporting period. Forty-nine percent (49%) of 0-2 year-olds and 49% of 3-5 year-olds were adopted. (Table 12A)

TABLE 12A. CONSUMERS RELEASED FOR ADOPTION BY AGE: YEAR ENDING 3/31/09

DCF Geographic Region	Age Group	Total Consumers Released for Adoption*	Consumers Adopted	% of Total
West		453	159	35%
	(0 - 2 yrs)	103	40	39%
	(3 - 5 yrs)	107	56	52%
	(6 - 11 yrs)	119	47	39%
	(12 - 17 yrs)	87	15	17%
	18 or older	37	1	3%
Central		323	121	37%
	(0 - 2 yrs)	62	35	56%
	(3 - 5 yrs)	72	38	53%
	(6 - 11 yrs)	93	31	33%
	(12 - 17 yrs)	75	16	21%
	18 or older	21	1	5%
Northeast		274	78	28%
	(0 - 2 yrs)	36	18	50%
	(3 - 5 yrs)	44	28	64%
	(6 - 11 yrs)	54	20	37%
	(12 - 17 yrs)	90	11	12%
	18 or older	50	1	2%
Metro		179	83	46%
	(0 - 2 yrs)	54	32	59%
	(3 - 5 yrs)	29	22	76%
	(6 - 11 yrs)	45	27	60%
	(12 - 17 yrs)	32	2	6%
	18 or older	19	--	--
Southeast		570	130	23%
	(0 - 2 yrs)	141	44	31%
	(3 - 5 yrs)	122	43	35%
	(6 - 11 yrs)	122	32	26%
	(12 - 17 yrs)	126	11	9%
	18 or older	59	--	--
Boston		275	73	27%
	(0 - 2 yrs)	66	22	33%
	(3 - 5 yrs)	65	34	52%
	(6 - 11 yrs)	54	11	20%
	(12 - 17 yrs)	66	6	9%
	18 or older	24	--	--
Adoption Contracts^(a)		192	76	40%
	(0 - 2 yrs)	27	13	48%
	(3 - 5 yrs)	42	17	40%
	(6 - 11 yrs)	86	34	40%
	(12 - 17 yrs)	37	12	32%
Other^(b)		10	6	60%
	(0 - 2 yrs)	3	2	67%
	(3 - 5 yrs)	2	1	50%
	(6 - 11 yrs)	3	2	67%
	(12 - 17 yrs)	2	1	50%
STATEWIDE		2,276	726	32%
	(0 - 2 yrs)	492	206	42%
	(3 - 5 yrs)	483	239	49%
	(6 - 11 yrs)	576	204	35%
	(12 - 17 yrs)	515	74	14%
	18 or older	210	3	1%

*Consumers Released for Adoption = Children with a Termination of Parental Rights (TPR) finalized before or during the reporting period.

^(a) Licensed private adoption agencies that contract with DCF to provide case management services.

^(b) Includes primarily families served through Central Office contracts.

- During the 12-month period ending 3/31/09, 35% of females and 29% of males who were “released for adoption” were adopted. (Table 12B below)

TABLE 12B. CONSUMERS RELEASED FOR ADOPTION BY GENDER: YEAR ENDING 3/31/09

DCF Geographic Region	Gender	Total Consumers Released for Adoption*	Consumers Adopted	% Adopted
West		453	159	35%
	Female	214	85	40%
	Male	239	74	31%
Central		323	121	37%
	Female	165	67	41%
	Male	158	54	34%
Northeast		274	78	28%
	Female	123	43	35%
	Male	151	35	23%
Metro		179	83	46%
	Female	92	39	42%
	Male	87	44	51%
Southeast		570	130	23%
	Female	265	66	25%
	Male	305	64	21%
Boston		275	73	27%
	Female	127	36	28%
	Male	148	37	25%
Adoption Contracts ^(a)		192	76	40%
	Female	81	33	41%
	Male	111	43	39%
Other ^(b)		10	6	60%
	Female	5	4	80%
	Male	5	2	40%
STATEWIDE		2,276	726	32%
	Female	1,072	373	35%
	Male	1,204	353	29%

*Consumers Released for Adoption = Children with a Termination of Parental Rights (TPR) finalized before or during the reporting period.

^(a) Licensed private adoption agencies that contract with DCF to provide case management services.

^(b) Includes primarily families served through Central Office contracts.

- During the 12-month period ending 3/31/09, 34% of White children & 32% of Asian children were adopted, whereas 25% of Black children were adopted. (Table 12C below)

TABLE 12C. CONSUMERS RELEASED FOR ADOPTION BY RACE: YEAR ENDING 3/31/09

DCF Geographic Region	Race	Total Consumers Released for Adoption*	Consumers Adopted	% Adopted
West		453	159	35%
	White	299	112	37%
	Black	45	12	27%
	Native American	1	1	100%
	Other ^(c)	68	21	31%
	Multi-Racial	40	13	33%
Central		323	121	37%
	White	202	83	41%
	Black	40	12	30%
	Asian	1	--	---
	Native American	1	--	---
	Other ^(c)	61	20	33%
	Multi-Racial	18	6	33%
Northeast		274	78	28%
	White	167	58	35%
	Black	35	7	20%
	Asian	7	1	14%
	Other ^(c)	44	6	14%
	Multi-Racial	21	6	29%
Metro		179	83	46%
	White	114	59	52%
	Black	37	7	19%
	Asian	1	--	---
	Native American	1	--	---
	Other ^(c)	18	10	56%
	Multi-Racial	8	7	88%
Southeast		570	130	23%
	White	388	85	22%
	Black	86	16	19%
	Asian	2	1	50%
	Native American	2	--	---
	Other ^(c)	30	8	27%
	Multi-Racial	62	20	32%
Boston		275	73	27%
	White	73	19	26%
	Black	136	33	24%
	Asian	2	--	---
	Other ^(c)	49	15	31%
	Multi-Racial	15	6	40%
Adoption Contracts^(a)		192	76	40%
	White	87	39	45%
	Black	33	13	39%
	Asian	6	4	67%
	Native American	1	--	---
	Other ^(c)	48	16	33%
	Multi-Racial	17	4	24%
Other^(b)		10	6	60%
	White	5	2	40%
	Black	2	2	100%
	Other ^(c)	1	1	100%
	Multi-Racial	2	1	50%
STATEWIDE		2,276	726	32%
	White	1,335	457	34%
	Black	414	102	25%
	Asian	19	6	32%
	Native American	6	1	17%
	Other ^(c)	319	97	30%
	Multi-Racial	183	63	34%

*Consumers Released for Adoption = Children with a Termination of Parental Rights (TPR) finalized before or during the reporting period.

^(a) Licensed private adoption agencies that contract with DCF to provide case management services.

^(b) Includes primarily families served through Central Office contracts. ^(c) Includes Native Hawaiian and Other Pacific Islanders.

- During the 12-month period ending 3/31/09, 33% of Non-Hispanic/Latino(a) children were adopted, whereas 28% of Hispanic/Latino(a) children were adopted. (Table 12D below)

TABLE 12D. CONSUMERS RELEASED FOR ADOPTION BY HISPANIC/LATINO(A) ORIGIN: YEAR ENDING 3/31/09

DCF Geographic Region	Hispanic / Latino(a) Origin	Total Consumers Released for Adoption*	Consumers Adopted	% of Total
West		453	159	35%
	Hispanic/Latino(a)	143	51	36%
	Not Hispanic/Latino(a)	278	97	35%
	Unable to Determine	32	11	34%
Central		323	121	37%
	Hispanic/Latino(a)	114	31	27%
	Not Hispanic/Latino(a)	182	81	45%
	Unable to Determine	27	9	33%
Northeast		274	78	28%
	Hispanic/Latino(a)	102	12	12%
	Not Hispanic/Latino(a)	161	60	37%
	Unable to Determine	11	6	55%
Metro		179	83	46%
	Hispanic/Latino(a)	15	6	40%
	Not Hispanic/Latino(a)	142	64	45%
	Unable to Determine	22	13	59%
Southeast		570	130	23%
	Hispanic/Latino(a)	70	13	19%
	Not Hispanic/Latino(a)	467	110	24%
	Unable to Determine	33	7	21%
Boston		275	73	27%
	Hispanic/Latino(a)	55	21	38%
	Not Hispanic/Latino(a)	199	43	22%
	Unable to Determine	21	9	43%
Adoption Contracts ^(a)		192	76	40%
	Hispanic/Latino(a)	61	24	39%
	Not Hispanic/Latino(a)	117	52	44%
	Unable to Determine	14	---	---
Other ^(b)		10	6	60%
	Hispanic/Latino(a)	1	1	100%
	Not Hispanic/Latino(a)	8	5	63%
	Unable to Determine	1	---	---
STATEWIDE		2,276	726	32%
	Hispanic/Latino(a)	561	159	28%
	Not Hispanic/Latino(a)	1,554	512	33%
	Unable to Determine	161	55	34%

*Consumers Released for Adoption = Children with a Termination of Parental Rights (TPR) finalized before or during the reporting period.

^(a) Licensed private adoption agencies that contract with DCF to provide case management services.

^(b) Includes primarily families served through Central Office contracts.

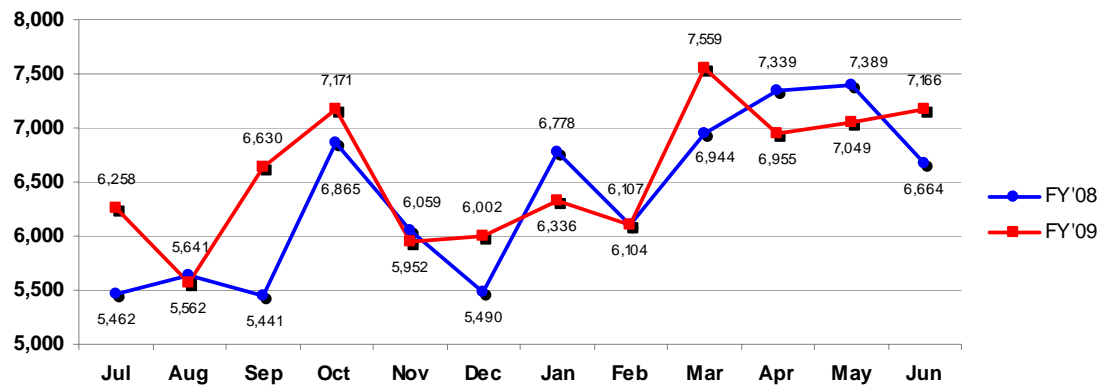
Child Maltreatment Reports and Investigations

51A Reports – FY'2009

- Reports of child abuse or neglect have shown significant variation over the last several years. On average, 6,348 reports were filed each month in FY'08. The FY'09 average was 6,562 reports per month (3.4% increase over FY'08). (**Figure 13A** below)
 - FY'2009 Reports = 78,744
 - FY'2008 Reports = 76,179

- In the past 24 months, these reports have varied from a low of 5,441 to a high of 7,559; a difference of 2,118 (38.9%) reports.

FIGURE 13A. 51A Reports

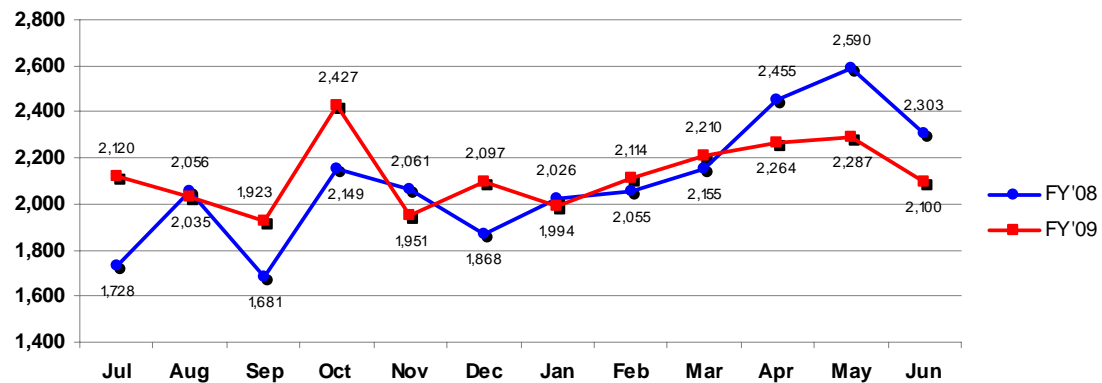


Investigations – FY'2009

- On average, 1/3 of the reports of child abuse or neglect are substantiated during investigation. On average, 2,094 investigations were substantiated each month in FY'08. The FY'09 average was 2,127 substantiated investigations per month (1.6% increase over FY'08). (**Figure 13B** below)
 - FY'2009 Investigations = 25,522
 - FY'2008 Investigations = 25,127

- In the past 24 months, substantiated (i.e., supported) investigations have varied from a low of 1,681 to a high of 2,590; a difference of 909 (54.1%) investigations.

FIGURE 13B. Substantiated Investigations of Abuse or Neglect



51A Reports – FY'2008 Details

- The duplicated count of reported children increased substantially between 2006–2008 (9% increase). This follows a slower but still steady increase from 1998–2008.
- From 1989–2008, the duplicated count of reported children with allegations of neglect rose from 38,010 to 101,243; supports rose from 14,048 to 34,973. The counts for physical and sexual abuse have fluctuated over the same time period but are pretty similar now to then.
- Both the screen-in rate and the support rate were at the high end of historic ranges in 2008.
- There is a strong association between high victimization rates by city/town and indicators of poverty and stress (i.e., %households on public assistance; %families living below poverty level; %families with single female head of household; %unemployed; high teen birth rate; and lowest median income).
- Fifty-nine percent (59%) of the children with a supported investigation in 2008 had been named in a prior investigation (34% had a prior supported investigation and 25% had a prior unsupported investigation).
- From 1989–2008, maltreatment in the 0-5 age group has declined while maltreatment in the 12-17 age group has increased.
- From 1983–2008, the screen-in rate declined from 73% to 68% (it has been as low as 55%, but has not exceeded 68% since 1986) and the support rate has increased from 48% to 58% (from 1983–1995 it fluctuated between 48% and 55%; since 1995 it has steadily increased).
- While only 3% of teen mothers perpetrated neglect in 2008, 46% of the mothers who perpetrated neglect in 2008 were less than 18 years old when their first child was born—suggesting an association between teen parenting and future risk for perpetrating neglect.
- “Type” of mandated reporter is not a mandatory field on FamilyNet. An unfortunate consequence is that the largest “type” category for the reporter of each maltreatment allegation type is “missing.”
 - Duplicated count of children with neglect reported by “largest” reporter type:
 - “Missing” = 20,904
 - Law Enforcement = 18,311
 - Medical = 8,116
 - School Personnel = 8,040 (this is a higher effective rate than medical as school personnel do not report during school holidays—about 3 months/year).

Repeat Maltreatment

- All children should be safe from repeat maltreatment.
- In FY'2009, DCF targeted to have no more than 2.7% of clinical cases that closed during the year, reopen in protective cases within 90-days of being closed.
 - Actual performance was 2.8%: 96.4% of the target was achieved.
- In FY'2009, DCF targeted to have no more than 9.0% (while working toward the National Standard of 5.4% or less) of children who were victims of supported allegations of abuse/neglect in a subsequent supported allegation during the following 6-months.
 - Actual performance was 11.0: 97.0% of the target was achieved.
 - Asian Children = 5.4%
 - Black Children = 12.7%
 - Hispanic/Latino(a) Children = 12.6%
 - White Children = 12.6%
- In FY'2009, DCF targeted to have at minimum 99.40% (while working toward the National Standard of 99.68% or greater) of children living in foster care and congregate care kept safe from supported allegations of child abuse or neglect by their caretakers.
 - Actual performance was 98.78%: 99.0% of the target was achieved.
 - DCF met its Federal CFSR PIP target on this indicator.

High Risk Consumers

Consumers with Multiple Reports of Abuse or Neglect

- DCF recognizes families and children with multiple reports of abuse or neglect as a high-risk group within its broader target population.
- Regional and Area Office staff review management reports which provides detail on those consumers with multiple reports of abuse or neglect.
- These reviews are incorporated within the continuous quality improvement (CQI) structures of the Area, Regional, and Central Offices.

- During the 12-month period ending 3/31/09, DCF received reports of abuse or neglect on 79,360 discrete child consumers. Of these, 1,075 (1%) were "named as alleged victims" in 3-or-more reports of abuse or neglect within 0-3 months. By 4-6 months, an additional 2,038 (3%) were "named." By 7-12 months, another 6,117 (8%) child consumers were "named." Table 14A presents these consumers by age.

TABLE 14A. CONSUMERS WITH MULTIPLE REPORTS OF ABUSE OR NEGLECT BY AGE: YEAR ENDING 3/09

DCF Geographic Region	Age Group	Consumers with Reports of Abuse or Neglect	Consumers with 3 or > Reports of A/N by 0-3 Months		Consumers with 3 or > Reports of A/N by 4-6 Months		Consumers with 3 or > Reports of A/N by 7-12 Months	
		No.	No.	%	No.	%	No.	%
West		17,391	323	2%	626	4%	1,785	10%
	(0 - 2 yrs)	2,851	70	2%	118	4%	265	9%
	(3 - 5 yrs)	2,853	51	2%	125	4%	352	12%
	(6 - 11 yrs)	5,441	103	2%	215	4%	608	11%
	(12 - 17 yrs)	5,216	99	2%	164	3%	540	10%
	18 or older	307	---	---	4	1%	20	7%
	Missing	723	---	---	---	---	---	---
Central		11,166	149	1%	253	2%	833	7%
	(0 - 2 yrs)	1,709	28	2%	44	3%	129	8%
	(3 - 5 yrs)	1,732	28	2%	39	2%	162	9%
	(6 - 11 yrs)	3,446	49	1%	87	3%	299	9%
	(12 - 17 yrs)	3,470	43	1%	78	2%	223	6%
	18 or older	206	1	*	5	2%	20	10%
	Missing	603	---	---	---	---	---	---
Northeast		12,758	156	1%	322	3%	900	7%
	(0 - 2 yrs)	2,051	26	1%	51	2%	144	7%
	(3 - 5 yrs)	2,076	27	1%	58	3%	184	9%
	(6 - 11 yrs)	4,070	62	2%	114	3%	310	8%
	(12 - 17 yrs)	3,910	41	1%	99	3%	258	7%
	18 or older	208	---	---	---	---	4	2%
	Missing	443	---	---	---	---	---	---
Metro		12,529	111	1%	228	2%	727	6%
	(0 - 2 yrs)	1,812	24	1%	41	2%	92	5%
	(3 - 5 yrs)	1,845	21	1%	43	2%	127	7%
	(6 - 11 yrs)	3,756	35	1%	75	2%	247	7%
	(12 - 17 yrs)	4,185	31	1%	65	2%	253	6%
	18 or older	273	---	---	4	1%	8	3%
	Missing	658	---	---	---	---	---	---
Southeast		16,742	226	1%	400	2%	1,247	7%
	(0 - 2 yrs)	2,842	41	1%	75	3%	221	8%
	(3 - 5 yrs)	2,732	48	2%	72	3%	262	10%
	(6 - 11 yrs)	5,074	75	1%	131	3%	427	8%
	(12 - 17 yrs)	4,830	60	1%	120	2%	322	7%
	18 or older	313	2	1%	2	1%	15	5%
	Missing	951	---	---	---	---	---	---
Boston		8,606	100	1%	183	2%	546	6%
	(0 - 2 yrs)	1,472	22	1%	38	3%	106	7%
	(3 - 5 yrs)	1,419	21	1%	29	2%	131	9%
	(6 - 11 yrs)	2,646	30	1%	57	2%	157	6%
	(12 - 17 yrs)	2,536	27	1%	59	2%	147	6%
	18 or older	151	---	---	---	---	5	3%
	Missing	382	---	---	---	---	---	---
Other^(a)		168	10	6%	26	15%	79	47%
	(0 - 2 yrs)	21	1	5%	4	19%	7	33%
	(3 - 5 yrs)	20	1	5%	6	30%	12	60%
	(6 - 11 yrs)	56	4	7%	9	16%	21	38%
	(12 - 17 yrs)	55	4	7%	6	11%	34	62%
	18 or older	6	---	---	1	17%	5	83%
	Missing	10	---	---	---	---	---	---
STATEWIDE		79,360	1,075	1%	2,038	3%	6,117	8%
	(0 - 2 yrs)	12,758	212	2%	371	3%	964	8%
	(3 - 5 yrs)	12,677	197	2%	372	3%	1,230	10%
	(6 - 11 yrs)	24,489	358	1%	688	3%	2,069	8%
	(12 - 17 yrs)	24,202	305	1%	591	2%	1,777	7%
	18 or older	1,464	3	*	16	1%	77	5%
	Missing	3,770	---	---	---	---	---	---

* = Less than 1% after rounding-off. ^(a) Includes families served through Central Office as well as licensed private adoption agencies that contract with DCF.

- Table 14B presents a gender profile of children with multiple reports of abuse or neglect during the 12-month period ending 3/31/09.

TABLE 14B. CONSUMERS WITH MULTIPLE REPORTS OF ABUSE OR NEGLECT BY GENDER: YEAR ENDING 3/09

DCF Geographic Region	Gender	Consumers with Reports of Abuse or Neglect	Consumers with 3 or > Reports of A/N by 0-3 Months		Consumers with 3 or > Reports of A/N by 4-6 Months		Consumers with 3 or > Reports of A/N by 7-12 Months	
		No.	No.	%	No.	%	No.	%
West		17,391	323	2%	626	4%	1,785	10%
	Female	7,850	171	2%	332	4%	858	11%
	Male	7,956	152	2%	294	4%	927	12%
	Missing	1,585	---	---	---	---	---	---
Central		11,166	149	1%	253	2%	833	7%
	Female	5,345	74	1%	121	2%	403	8%
	Male	5,368	75	1%	132	2%	430	8%
	Missing	453	---	---	---	---	---	---
Northeast		12,758	156	1%	322	3%	900	7%
	Female	5,927	80	1%	156	3%	474	8%
	Male	6,054	76	1%	166	3%	426	7%
	Missing	777	---	---	---	---	---	---
Metro		12,529	111	1%	228	2%	727	6%
	Female	5,718	60	1%	121	2%	371	6%
	Male	5,694	51	1%	107	2%	356	6%
	Missing	1,117	---	---	---	---	---	---
Southeast		16,742	226	1%	400	2%	1,247	7%
	Female	7,329	116	2%	199	3%	599	8%
	Male	7,686	110	1%	201	3%	648	8%
	Missing	1,727	---	---	---	---	---	---
Boston		8,606	100	1%	183	2%	546	6%
	Female	4,168	49	1%	95	2%	302	7%
	Male	4,082	51	1%	88	2%	244	6%
	Missing	356	---	---	---	---	---	---
Other^(a)		168	10	6%	26	15%	79	47%
	Female	79	5	6%	13	16%	36	46%
	Male	73	5	7%	13	18%	43	59%
	Missing	16	---	---	---	---	---	---
STATEWIDE		79,360	1,075	1%	2,038	3%	6,117	8%
	Female	36,416	555	2%	1,037	3%	3,043	8%
	Male	36,913	520	1%	1,001	3%	3,074	8%
	Missing	6,031	---	---	---	---	---	---

^(a) Includes families served through Central Office as well as licensed private adoption agencies that contract with DCF.

- Table 14C describes children with multiple reports of abuse or neglect during the 12-month period ending 3/31/09 by race.

TABLE 14C. CONSUMERS WITH MULTIPLE REPORTS OF ABUSE OR NEGLECT BY RACE: YEAR ENDING 3/09

DCF Geographic Region	Race	Consumers with Reports of Abuse or Neglect	Consumers with 3 or > Reports of A/N by 0-3 Months		Consumers with 3 or > Reports of A/N by 4-6 Months		Consumers with 3 or > Reports of A/N by 7-12 Months	
		No.	No.	%	No.	%	No.	%
West		17,391	323	2%	626	4%	1,785	10%
	White	6,024	171	3%	355	6%	1,041	17%
	Black	1,108	17	2%	55	5%	163	15%
	Asian	58	5	9%	---	---	4	7%
	Native American	13	1	8%	1	8%	1	8%
	Other ^(b)	12	---	---	---	---	2	17%
	Multi-Racial	352	9	3%	32	9%	66	19%
	Unable to Determine	1,638	49	3%	110	7%	302	18%
	Missing	8,186	71	1%	73	1%	206	3%
Central		11,166	149	1%	253	2%	833	7%
	White	4,960	101	2%	152	3%	573	12%
	Black	634	10	2%	22	3%	51	8%
	Asian	76	---	---	3	4%	1	1%
	Native American	14	1	7%	---	---	---	---
	Other ^(b)	4	---	---	---	---	---	---
	Multi-Racial	318	6	2%	11	3%	48	15%
	Unable to Determine	1,045	11	1%	38	4%	76	7%
	Missing	4,115	20	*	27	1%	84	2%
Northeast		12,758	156	1%	322	3%	900	7%
	White	5,082	97	2%	202	4%	554	11%
	Black	707	9	1%	24	3%	67	9%
	Asian	415	5	1%	5	1%	19	5%
	Native American	9	---	---	---	---	1	11%
	Other ^(b)	6	---	---	---	---	---	---
	Multi-Racial	280	7	3%	14	5%	34	12%
	Unable to Determine	1,673	19	1%	53	3%	174	10%
	Missing	4,586	19	*	24	1%	51	1%
Metro		12,529	111	1%	228	2%	727	6%
	White	4,513	69	2%	141	3%	465	10%
	Black	1,409	10	1%	28	2%	99	7%
	Asian	219	2	1%	2	1%	9	4%
	Native American	10	---	---	2	20%	---	---
	Other ^(b)	2	---	---	---	---	---	---
	Multi-Racial	211	3	1%	4	2%	15	7%
	Unable to Determine	723	10	1%	25	3%	78	11%
	Missing	5,442	17	*	26	*	61	1%
Southeast		16,742	226	1%	400	2%	1,247	7%
	White	6,221	144	2%	260	4%	849	14%
	Black	1,402	29	2%	40	3%	153	11%
	Asian	56	1	2%	1	2%	1	2%
	Native American	31	---	---	4	13%	1	3%
	Other ^(b)	1	1	100%	---	---	---	---
	Multi-Racial	367	11	3%	20	5%	59	16%
	Unable to Determine	682	13	2%	27	4%	63	9%
	Missing	7,982	27	*	48	1%	121	2%
Boston		8,606	100	1%	183	2%	546	6%
	White	1,481	19	1%	51	3%	142	10%
	Black	3,139	47	1%	81	3%	261	8%
	Asian	139	1	1%	3	2%	8	6%
	Native American	10	---	---	---	---	---	---
	Other ^(b)	7	---	---	---	---	1	14%
	Multi-Racial	120	7	6%	8	7%	20	17%
	Unable to Determine	1,064	18	2%	30	3%	88	8%
	Missing	2,646	8	*	10	*	26	1%
Other^(a)		168	10	6%	26	15%	79	47%
	White	64	8	13%	8	13%	32	50%
	Black	26	---	---	4	15%	15	58%
	Asian	1	---	---	---	---	1	100%
	Multi-Racial	4	---	---	2	50%	2	50%
	Unable to Determine	13	1	8%	3	23%	2	15%
	Missing	60	1	2%	9	15%	27	45%
STATEWIDE		79,360	1,075	1%	2,038	3%	6,117	8%
	White	28,345	609	2%	1,169	4%	3,656	13%
	Black	8,425	122	1%	254	3%	809	10%
	Asian	964	14	1%	14	1%	43	4%
	Native American	87	2	2%	7	8%	3	3%
	Other ^(b)	32	1	3%	---	---	3	9%
	Multi-Racial	1,652	43	3%	91	6%	244	15%
	Unable to Determine	6,838	121	2%	286	4%	783	11%
	Missing	33,017	163	*	217	1%	576	2%

^(a) Families served through Central Office as well as licensed private adoption agencies that contract with DCF. ^(b) Native Hawaiian and Other Pacific Islanders.

- Table 14D describes children with multiple reports of abuse or neglect during the 12-month period ending 3/31/09 by Hispanic/Latino(a) origin.

TABLE 14D. CONSUMERS WITH MULTIPLE REPORTS OF ABUSE OR NEGLECT BY HISPANIC ORIGIN: YR ENDING 3/09

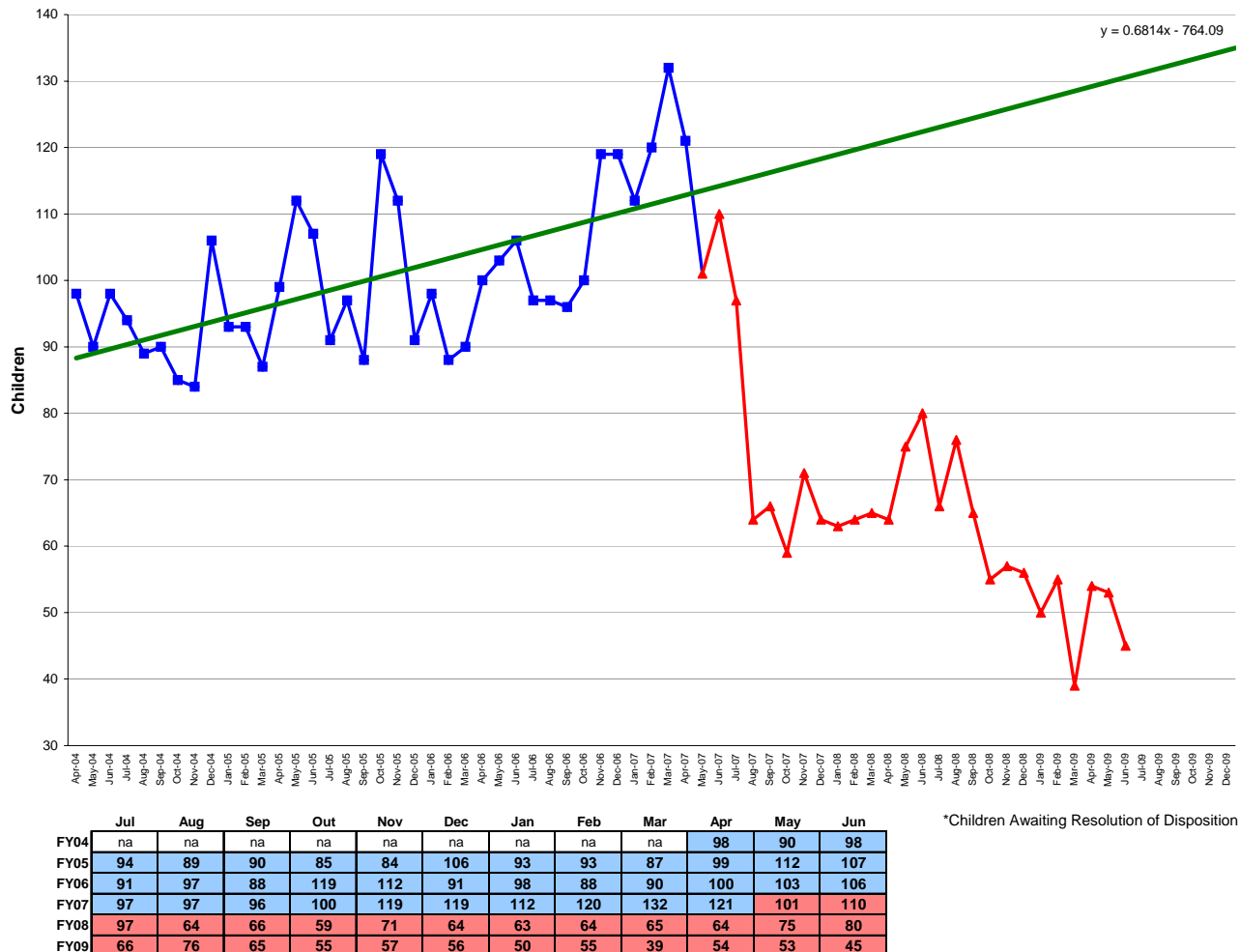
DCF Geographic Region	Hispanic / Latino(a) Origin	Consumers with Reports of Abuse or Neglect		Consumers with 3 or > Reports of A/N by 0-3 Months		Consumers with 3 or > Reports of A/N by 4-6 Months		Consumers with 3 or > Reports of A/N by 7-12 Months	
		No.	%	No.	%	No.	%	No.	%
West		17,391		323	2%	626	4%	1,785	10%
	Hispanic/Latino(a)	3,299		61	2%	184	6%	515	16%
	Not Hispanic/Latino(a)	5,154		167	3%	344	7%	953	18%
	Unable to Determine	8,938		95	1%	98	1%	317	4%
Central		11,166		149	1%	253	2%	833	7%
	Hispanic/Latino(a)	1,807		33	2%	59	3%	181	10%
	Not Hispanic/Latino(a)	4,277		90	2%	157	4%	527	12%
	Unable to Determine	5,082		26	1%	37	1%	125	2%
Northeast		12,758		156	1%	322	3%	900	7%
	Hispanic/Latino(a)	2,468		33	1%	83	3%	284	12%
	Not Hispanic/Latino(a)	4,084		87	2%	190	5%	499	12%
	Unable to Determine	6,206		36	1%	49	1%	117	2%
Metro		12,529		111	1%	228	2%	727	6%
	Hispanic/Latino(a)	912		18	2%	30	3%	81	9%
	Not Hispanic/Latino(a)	3,875		56	1%	136	4%	499	13%
	Unable to Determine	7,742		37	0%	62	1%	147	2%
Southeast		16,742		226	1%	400	2%	1,247	7%
	Hispanic/Latino(a)	1,070		16	1%	45	4%	143	13%
	Not Hispanic/Latino(a)	6,250		157	3%	286	5%	886	14%
	Unable to Determine	9,422		53	1%	69	1%	218	2%
Boston		8,606		100	1%	183	2%	546	6%
	Hispanic/Latino(a)	1,506		26	2%	43	3%	149	10%
	Not Hispanic/Latino(a)	2,912		53	2%	122	4%	324	11%
	Unable to Determine	4,188		21	1%	18	0%	73	2%
Other^(a)		168		10	6%	26	15%	79	47%
	Hispanic/Latino(a)	19		1	5%	4	21%	2	11%
	Not Hispanic/Latino(a)	70		4	6%	9	13%	35	50%
	Unable to Determine	79		5	6%	13	16%	42	53%
STATEWIDE		79,360		1,075	1%	2,038	3%	6,117	8%
	Hispanic/Latino(a)	11,081		188	2%	448	4%	1,355	12%
	Not Hispanic/Latino(a)	26,622		614	2%	1,244	5%	3,723	14%
	Unable to Determine	41,657		273	1%	346	1%	1,039	2%

^(a) Includes families served through Central Office as well as licensed private adoption agencies that contract with DCF.

Hospitalized Consumers

- DCF recognizes children who have been hospitalized—before or after involvement with DCF—as a high-risk group within its broader target population.
- Figure 15A, the CARD (*Children Awaiting Resolution and Disposition*) Trend Analysis graph provides a count of children who have remained in an acute psychiatric hospital or Community Based Acute Treatment (CBAT) program beyond medical necessity; on the last day of each month, since April of 2004. For some children, a discharge plan may have been in progress; in other cases, it may have been in the child's best interest to remain in an acute care hospital or other treatment center until an appropriate discharge placement became available. ***Nonetheless, a trend analysis reveals that left unchecked, the number of children awaiting resolution and disposition would have continued to steadily increase over time (green line).***
- The Executive Office of Health and Human Services and its agencies—including the Department of Children and Families, Department of Mental Health, Department of Youth Services and the Office of Medicaid—are committed to reducing the number of youth awaiting discharge. Case managers across state government are working closely with clinical staff at hospitals and community-based treatment centers to design individualized, comprehensive disposition plans that prioritize personal safety and the availability of appropriate support services for each youth. Toward this end, a significant reduction in the number of children awaiting resolution and disposition has been evident since the Spring of 2007:
 - ***In the 28-months between March 2007 and June 2009 there has been a 66% reduction in the number of DCF children awaiting placement from an acute psychiatric facility.***

FIGURE 15A. CARD* TREND ANALYSIS (APRIL 2004 - JUNE 2009)



- Within the 12-month period ending 3/31/09, 81,329 child consumers were in an open case for at least 1-day. Of these, 1,494 (2%) experienced an inpatient hospitalization (primarily psychiatric). Table 16A reveals that 6% of 18-or-older child consumers experienced an inpatient hospitalization.

TABLE 16A. CONSUMERS HOSPITALIZED BY AGE: YEAR ENDING 3/31/2009

DCF Geographic Region	Age Group	Consumer Children in Caseload [^]	Consumer Children Hospitalized	% of Total
West		16,773	266	2%
	(0 - 2 yrs)	2,863	8	*
	(3 - 5 yrs)	2,775	10	*
	(6 - 11 yrs)	4,956	58	1%
	(12 - 17 yrs)	5,509	163	3%
	18 or older	631	27	4%
	Missing	39	---	---
Central		11,703	197	2%
	(0 - 2 yrs)	1,885	12	1%
	(3 - 5 yrs)	1,820	1	*
	(6 - 11 yrs)	3,546	32	1%
	(12 - 17 yrs)	3,955	120	3%
	18 or older	471	32	7%
	Missing	26	---	---
Northeast		13,403	337	3%
	(0 - 2 yrs)	2,165	25	1%
	(3 - 5 yrs)	2,088	8	*
	(6 - 11 yrs)	3,987	42	1%
	(12 - 17 yrs)	4,546	220	5%
	18 or older	593	42	7%
	Missing	24	---	---
Metro		10,727	189	2%
	(0 - 2 yrs)	1,607	8	*
	(3 - 5 yrs)	1,574	3	*
	(6 - 11 yrs)	3,126	16	1%
	(12 - 17 yrs)	3,932	132	3%
	18 or older	453	30	7%
	Missing	35	---	---
Southeast		16,562	242	1%
	(0 - 2 yrs)	2,845	9	*
	(3 - 5 yrs)	2,682	2	*
	(6 - 11 yrs)	4,825	41	1%
	(12 - 17 yrs)	5,554	156	3%
	18 or older	630	34	5%
	Missing	26	---	---
Boston		9,756	238	2%
	(0 - 2 yrs)	1,631	18	1%
	(3 - 5 yrs)	1,497	5	*
	(6 - 11 yrs)	2,840	30	1%
	(12 - 17 yrs)	3,349	149	4%
	18 or older	415	36	9%
	Missing	24	---	---
Other^(a)		2,405	25	1%
	(0 - 2 yrs)	260	---	---
	(3 - 5 yrs)	427	---	---
	(6 - 11 yrs)	784	7	1%
	(12 - 17 yrs)	784	16	2%
	18 or older	144	2	1%
	Missing	6	---	---
STATEWIDE		81,329	1,494	2%
	(0 - 2 yrs)	13,256	80	1%
	(3 - 5 yrs)	12,863	29	*
	(6 - 11 yrs)	24,064	226	1%
	(12 - 17 yrs)	27,629	956	3%
	18 or older	3,337	203	6%
	Missing	180	---	---

[^]Consumer Children in Caseload = Discrete count of child consumers in open cases for at least 1-day during the reporting period.

* = Less than 1% after rounding-off. ^(a) Families served through Central Office as well as licensed private adoption agencies.

- Table 16B reveals that 2% of female and male consumers experienced an inpatient hospitalization within the 12-month period ending 3/31/09.

TABLE 16B. CONSUMERS HOSPITALIZED BY GENDER: YEAR ENDING 3/31/09

DCF Geographic Region	Gender	Consumer Children in Caseload [^]	Consumer Children Hospitalized	% of Total
West		16,773	266	2%
	Female	8,125	133	2%
	Male	8,464	133	2%
	Missing	184	---	---
Central		11,703	197	2%
	Female	5,698	88	2%
	Male	5,961	109	2%
	Missing	44	---	---
Northeast		13,403	337	3%
	Female	6,465	147	2%
	Male	6,836	190	3%
	Missing	102	---	---
Metro		10,727	189	2%
	Female	5,188	96	2%
	Male	5,415	93	2%
	Missing	124	---	---
Southeast		16,562	242	1%
	Female	7,956	121	2%
	Male	8,424	121	1%
	Missing	182	---	---
Boston		9,756	238	2%
	Female	4,767	126	3%
	Male	4,936	112	2%
	Missing	53	---	---
Other^(a)		2,405	25	1%
	Female	1,171	16	1%
	Male	1,182	9	1%
	Missing	52	---	---
STATEWIDE		81,329	1,494	2%
	Female	39,370	727	2%
	Male	41,218	767	2%
	Missing	741	---	---

[^]Consumer Children in Caseload = Discrete count of child consumers in open cases for at least 1-day during the reporting period.

^(a) Includes families served through Central Office as well as licensed private adoption agencies that contract with DCF.

- Table 16C displays consumers who experienced an inpatient hospitalization within the 12-month period ending 3/31/09 by race.

TABLE 16C. CONSUMERS HOSPITALIZED BY RACE: YEAR ENDING 3/31/09

DCF Geographic Region	Race	Consumer Children in Caseload [^]	Consumer Children Hospitalized	% of Total
West		16,773	266	2%
	White	9,468	184	2%
	Black	1,932	34	2%
	Asian	96	1	1%
	Native American	14	---	---
	Other ^(b)	24	---	---
	Multi-Racial	650	9	1%
	Unable to Determine	3,572	38	1%
	Missing	1,017	---	---
Central		11,703	197	2%
	White	7,581	140	2%
	Black	1,078	15	1%
	Asian	158	3	2%
	Native American	26	---	---
	Other ^(b)	8	1	13%
	Multi-Racial	499	10	2%
	Unable to Determine	1,971	28	1%
	Missing	382	---	---
Northeast		13,403	337	3%
	White	7,550	211	3%
	Black	1,073	40	4%
	Asian	872	9	1%
	Native American	13	---	---
	Other ⁽²⁾	12	---	---
	Multi-Racial	533	15	3%
	Unable to Determine	2,833	61	2%
	Missing	517	1	*
Metro		10,727	189	2%
	White	6,220	114	2%
	Black	1,899	43	2%
	Asian	289	4	1%
	Native American	10	---	---
	Other ^(b)	6	1	17%
	Multi-Racial	382	10	3%
	Unable to Determine	1,270	17	1%
	Missing	651	---	---
Southeast		16,562	242	1%
	White	10,683	165	2%
	Black	2,653	48	2%
	Asian	110	1	1%
	Native American	46	2	4%
	Other ^(b)	9	---	---
	Multi-Racial	802	13	2%
	Unable to Determine	1,385	13	1%
	Missing	874	---	---
Boston		9,756	238	2%
	White	2,051	53	3%
	Black	4,663	135	3%
	Asian	265	6	2%
	Native American	9	---	---
	Other ^(b)	9	---	---
	Multi-Racial	193	4	2%
	Unable to Determine	2,295	40	2%
	Missing	271	---	---
Other^(a)		2,405	25	1%
	White	1,275	7	1%
	Black	350	8	2%
	Asian	49	---	---
	Native American	3	1	33%
	Multi-Racial	81	3	4%
	Unable to Determine	379	6	2%
	Missing	268	---	---
STATEWIDE		81,329	1,494	2%
	White	44,828	874	2%
	Black	13,648	323	2%
	Asian	1,839	24	1%
	Native American	121	3	2%
	Other ^(b)	68	2	3%
	Multi-Racial	3,140	64	2%
	Unable to Determine	13,705	203	1%
	Missing	3,980	1	*

[^]Consumer Children in Caseload = Discrete count of child consumers in open cases for at least 1-day during the reporting period.

^(a) Includes families served through Central Office as well as licensed private adoption agencies that contract with DCF.

^(b) Includes Native Hawaiian and Other Pacific Islanders. * = Less than 1% after rounding-off.

- Table 16D displays consumers who experienced an inpatient hospitalization within the 12-month period ending 3/31/09 by Hispanic/Latino(a) origin.

TABLE 16D. CONSUMERS HOSPITALIZED BY HISPANIC/LATINO(A) ORIGIN: YEAR ENDING 3/31/09

DCF Geographic Region	Hispanic/ Latino(a) Origin	Consumer Children in Caseload [^]	Consumer Children Hospitalized	% of Total
West		16,773	266	2%
	Hispanic/Latino(a)	6,100	84	1%
	Not Hispanic/Latino(a)	8,737	171	2%
	Unable to Determine	908	11	1%
	Missing	1,028	---	---
Central		11,703	197	2%
	Hispanic/Latino(a)	3,434	52	2%
	Not Hispanic/Latino(a)	7,336	143	2%
	Unable to Determine	486	2	*
	Missing	447	---	---
Northeast		13,403	337	3%
	Hispanic/Latino(a)	4,918	124	3%
	Not Hispanic/Latino(a)	7,331	203	3%
	Unable to Determine	496	9	2%
	Missing	658	1	*
Metro		10,727	189	2%
	Hispanic/Latino(a)	1,792	22	1%
	Not Hispanic/Latino(a)	7,443	158	2%
	Unable to Determine	577	9	2%
	Missing	915	---	---
Southeast		16,562	242	1%
	Hispanic/Latino(a)	2,369	31	1%
	Not Hispanic/Latino(a)	12,370	202	2%
	Unable to Determine	777	9	1%
	Missing	1,046	---	---
Boston		9,756	238	2%
	Hispanic/Latino(a)	3,295	63	2%
	Not Hispanic/Latino(a)	5,679	168	3%
	Unable to Determine	347	7	2%
	Missing	435	---	---
Other^(a)		2,405	25	1%
	Hispanic/Latino(a)	580	14	2%
	Not Hispanic/Latino(a)	1,405	11	1%
	Unable to Determine	103	---	---
	Missing	317	---	---
STATEWIDE		81,329	1,494	2%
	Hispanic/Latino(a)	22,488	390	2%
	Not Hispanic/Latino(a)	50,301	1,056	2%
	Unable to Determine	3,694	47	1%
	Missing	4,846	1	*

[^]Consumer Children in Caseload = Discrete count of child consumers in open cases for at least 1-day during the reporting period.

* = Less than 1% after rounding-off. ^(a) Includes families served through Central Office as well as licensed private adoption agencies.

Summary Spending Trends

FIGURE 17A. ALL ACCOUNT TYPES (Dollars in Millions)

Appropriation	SFY09 Actual Spending (as of 8/20/09)	SFY10 Projected Spending	SFY09 – 10 % Change
State Appropriations	\$801.7	\$780.6	-2.6%
Grants	\$14.7	\$15.3	4.0%
Trusts	\$2.6	\$3.9	52.2%
Capital	\$0.0	\$0.0	0.0%
Retained Revenue	\$2.7	\$4.7	75.6%
Total	\$821.7	\$804.5	-2.1%

FIGURE 17B. SPENDING TREND BY APPROPRIATION (Dollars in Millions)

Acct	Acct Name	SFY09 Actual Spending (as of 8/20/09)	SFY10 Projected Spending	SFY09 – 10 % Change
4800-0015	Clinical Supp Svcs and Operations	\$74.4	\$69.9	-6.0%
4800-0021	Comprehensive Soc Svcs Program	\$3.8	\$0.0	-100.0%
4800-0025	Foster Care Review	\$2.8	\$2.7	-2.6%
4800-0030	Regional and Area Lead Agencies	\$18.0	\$10.8	-40.4%
4800-0036	Sexual Abuse Intervention Ntwk	\$0.7	\$0.7	-1.7%
4800-0038	Services for Children & Families	\$299.7	\$297.7	-0.7%
4800-0041	Group Care Services	\$222.7	\$221.4	-0.6%
4800-0151	Alternative Lock-up Program	\$0.3	\$0.3	-13.7%
4800-1100	Social Worker Salaries	\$156.1	\$155.3	-0.5%
4800-1400	Domestic Violence Services	\$23.3	\$21.9	-5.7%
Subtotal State Approps		\$801.7	\$780.6	-2.6%

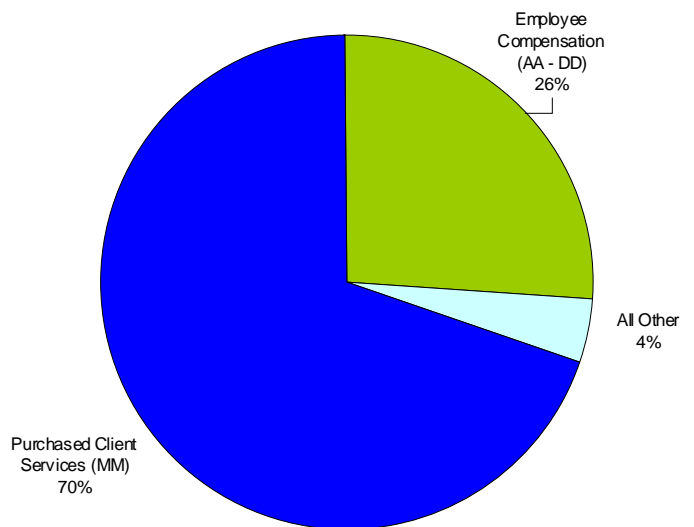
Notes: SFY09 actual Notes: SFY09 actual spending based on YTD 8/20/09 EFMR query
 SFY09 4800-0015 includes \$8.0M of IT spending shifted to EHS's 4000-1700 in SFY10

FIGURE 17C. SPENDING TREND BY OBJECT CLASS (Dollars in Millions)

Object Class	SFY09 Actual Spending (as of 8/20/09)	SFY10 Projected Spending	SFY09 – 10 % Change
Employee Compensation (AA-DD)	\$209.8	\$204.8	-2.3%
Administration & Operation (EE, JJ, LL)	\$7.5	\$6.8	-8.2%
Facility Operations (FF)	\$0.03	\$0.03	-8.3%
Energy, Utilities, and Space Rental (GG)	\$12.3	\$13.9	12.8%
Consultant Services (HH)	\$4.3	\$4.1	-4.9%
Equipment (KK)	\$0.03	\$0.03	3.4%
Purchase of Service (MM, PP)	\$559.9	\$550.4	-1.7%
Entitlement Programs (RR)	\$1.8	\$0.0	-100.0%
Construction, Debt, and Loans (NN, SS, TT)	\$0.2	\$0.4	159.0%
Information Technology (UU)	\$6.0	\$0.0	-100.0%
Total	\$801.7	\$780.6	-2.6%

FIGURE 17D. HISTORIC TRENDS

- Historically, 97% of DCF funding is supported by state appropriations; slightly less than 2% by federal grants; and 1% with other funds i.e. trusts, capital dollars and retained revenue.
- 70% of DCF's state appropriations are directed towards MM costs: i.e., purchase of services, payments to foster parents, adoptive parents and guardians.
- The second greatest cost component of DCF spending is employee compensation accounting for 26% of state funds. More than 75% of the employee compensation costs are associated with direct service staff.
- The remaining 4% of state dollars support DCF's administrative overhead costs, including a substantial space lease cost budget.

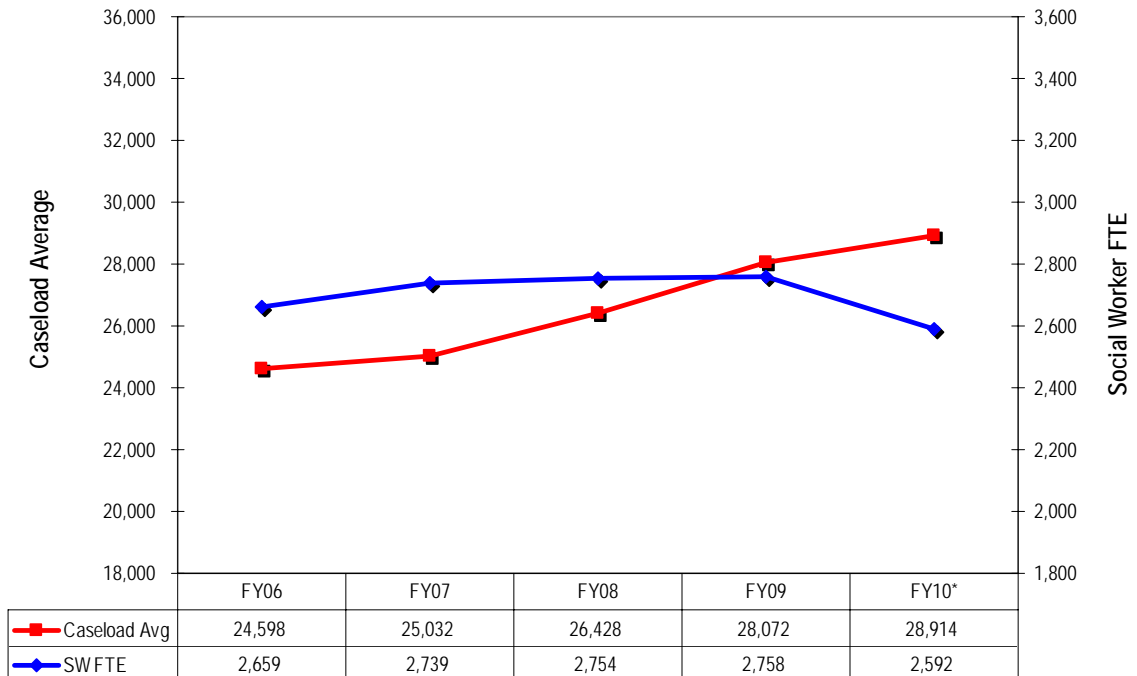


Breakdown of FY09 Spending

Employee Trends

- Figure 17E reveals that growth in social worker FTE's has not kept pace with growth in caseload averages.
- From FY06 – FY10, open cases are projected to grow by 17.5% while SW FTE's will decrease by 2.5%.
- The end result is there are fewer social workers to handle more cases causing caseload/workload ratios to rise.

FIGURE 17E. COMPARISON OF SOCIAL WORKER FTEs TO CASELOAD AVERAGE TRENDS



Conclusion

The Department is committed to utilizing data to inform our management of the child protective service delivery system. The ongoing efforts to strengthen our performance management system provide a critical opportunity to continually improve casework practices, and to monitor achievement of positive outcomes for the children and families served by DCF.